

**ATI**  
*électronique*  
[www.ati-electronique.fr](http://www.ati-electronique.fr)



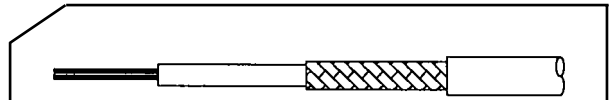
**COAXIAL CONNECTORS**

# SUMMARY

SUITABLE CABLES	2
P.C.B. / COAXIAL CABLE TERMINATIONS	3
Introduction	4
Type index	5
Three termination types	6
P.C.B. cable terminations - Economic type	7
P.C.B. cable terminations - Shielded type	11
P.C.B. cable terminations - Half-Shielded type	12
SMT cable terminations - Half-Shielded type	14
P.C.B. mounting details	15
Assembly procedures	16
Tools	19
COAXIAL CONNECTORS MICROMIN 2 GHz	
ULTRA MINIATURE 50 Ω SNAP	21
Introduction	22
Type index	23
Interchangeability	24
Coaxial connectors Micromin 2 GHz	25
Drilling plan - Assembly procedures	29
COAXIAL CONNECTORS NANOMIN 4 GHz	
ULTRA MINIATURE 50 Ω SNAP	33
Introduction	34
Type index	35
Interchangeability	36
Socket with antirotation	37
Socket without antirotation	38
Plugs soldering version	39
Plugs crimp version	41
Assembly procedures	42
COAXIAL CONNECTORS HN	
FOR NUCLEAR INSTRUMENTATION	45
Introduction	46
Male Plug and Receptacle	48
Female Plug and Receptacle	49
Female Coupler and Receptacle - T piece	50
Seal for plugs - Assembly procedure	51

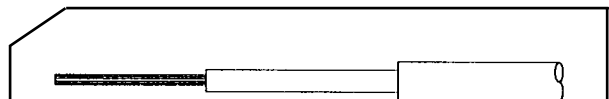
# SUITABLE CABLES

## ■ FLEXIBLE CABLES



CABLES		REFERENCES			Ø mm	Ø mm	Ø mm	Ø mm
Groups	Z Ω	MIL C 17 E	NFC 93550	OTHERS				
A	50	RG 196 A/U			0.30	0.90	1.40	1.90
	50	RG 178 B/U	KX 21 A		0.30	0.90	1.40	1.80
B	50			Microdot 250 3908	0.30	0.80	1.80 double braid	2.50
	50			Précicable CT 81	0.30	0.90	1.90 double braid	2.30
C	50			Filéca TS 50 D2	0.20	0.60	0.90	1.00
	55			Filotex 50 VMTX	0.20	0.50	0.80	1.20
	80			Filotex 75 VMTX	0.10	0.60	0.80	1.20
D	50			Axon P 812817	0.50	1.40	2.10 double braid	2.20
	50			Alpen A 22 DT	0.50	1.30	1.90 double braid	2.20
	50			Gore CSS 1022 K	0.50	1.30	1.90 double braid	2.20
G	50	RG 316 U	KX 22 A		0.50	1.50	2.00	2.50/2.80
	50	RG 188 A/U			0.50	1.50	2.00	2.50
	50	RG 174 A/U	KX3		0.50	1.50	2.10	2.50/2.80
	50		KX1		0.50	1.50	2.00	2.80
H	50			KX 22 A DT	0.50	1.50	2.30 double braid	2.70

## ■ SEMI-RIGID CABLES



CABLES		REFERENCES			Ø mm	Ø mm	Ø mm
Groups	Z Ω	MIL C 17 E	UTE 93350	OTHERS			
E	50			UT 47	0.30	0.90	1.20
F	50			UT 34	0.20	0.60	0.90
J	50	RG 405	KS 1	UT 85	0.50	1.70	2.20



## P.C.B. COAXIAL CABLE TERMINATIONS

# INTRODUCTION

---



## 3 termination types

- Economic type
- Shielded type
- Half-Shielded type

## Features

- Time saving by reduction of terminations and connection outputs.
- Easy assembly : no special tooling is needed for the cable preparation.
- Operationally secure : fitted cable is virtually pull-out proof.

## Construction

- Pitch 5.08 or 2.54. mm
- Body : brass.
- Insulator PTFE.
- Plating :
  - Standard : Tin-lead 60/40 (code 110).
  - Special : Nickel + Gold (code 131) – consult factory.

## Technical characteristics

### Environmental and Mechanical

- |                                  |                   |
|----------------------------------|-------------------|
| • Operating temperature : .....  | -55°C + 125°C     |
| • Damp heat (severity 5) : ..... | 21 days           |
| • Salt spray : .....             | 48 hours          |
| • Vibration : .....              | 10/2000 Hz – 20 G |

### Electrical

- |                                 |                |
|---------------------------------|----------------|
| • Working voltage : .....       | 250 Vrms 50 Hz |
| • Test voltage : .....          | 500 Vrms 50 Hz |
| • Insulation resistance : ..... | > 1000 MΩ      |

Nota : All sizes are in millimetres.

# TYPE INDEX

## ■ P.C.B. / CABLES TERMINATIONS

TYPES	SERIES	REFERENCES						SMT term.	PAGES	CABLES GROUPS
		P.C.B. termination								
		thickness 1.6 mm		thickness 2.4 mm		thickness 3.2 mm				
		Crimp	Solder	Crimp	Solder	Crimp	Solder			
ECONOMIC	22200				22202				6	A
					22203				6	D-G
					22204				6	A
					22205				6	D-G
					22206				7	A
					22207				7	D-G
	22300					22326			7	C
						22327			7	C
	B 514 C	B 514 C 01	B 514 C 02			B 514 C 21	B 514 C 22		8-9	G
		B 514 C 03	B 514 C 04			B 514 C 23	B 514 C 24		8-9	A
		B 514 C 07	B 514 C 08			B 514 C 27	B 514 C 28		8-9	B
		B 514 C 31	B 514 C 32			B 514 C 51	B 514 C 52		8-9	H
			B 514 C 34				B 514 C 54		9	J
	SHIELDED	5600				5600 B			10	D-G
						5600 A			10	A
HALF-SHIELDED	22200				22200			11	A	
					22201			11	D-G	
	B 350 C	B 350 C 01	B 350 C 02			B 350 C 21	B 350 C 22		12-13	D-G
		B 350 C 03	B 350 C 04			B 350 C 23	B 350 C 24		12-13	A
		B 350 C 07	B 350 C 08			B 350 C 27	B 350 C 28		12-13	B
		B 350 C 31	B 350 C 32			B 350 C 51	B 350 C 52		12-13	H
	B 270 C							B 270 C 01	14	A
								B 270 C 03	14	B
								B 270 C 04	14	CE

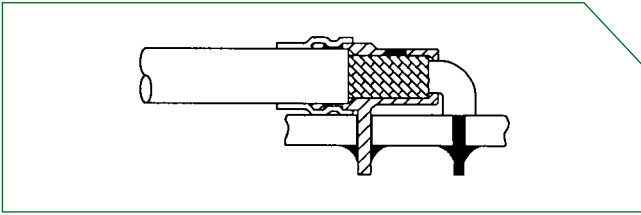
# THREE TERMINATION TYPES

---

## ■ ECONOMIC TYPE

### 22200 and 22300 series

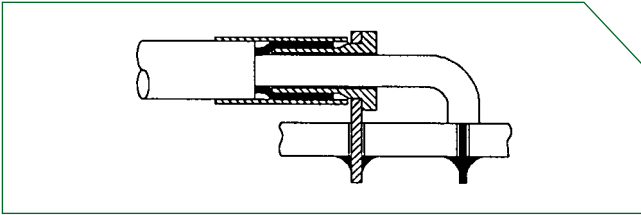
---



- P.C.B. termination thickness 2.4 mm.
- Cable groups A, C, D, G [see page 2].
- **Solder** braid.
- For 90° cable/p.c.b. [references 22206, 22207 and 22326].

### B 514 C series

---

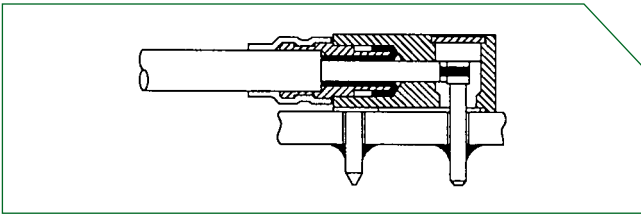


- P.C.B. termination thickness 1.6 to 3.2 mm.
- Cable groups A, B, G, H [see page 2].
- **Solder** or **crimp** braid.

## ■ SHIELDED TYPE

### 5600 series

---

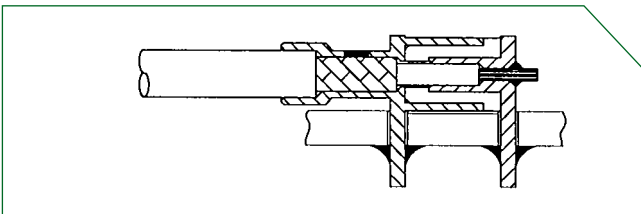


- P.C.B. termination thickness 2.4 mm.
- Cable groups A, D, G [see page 2].
- **Solder** braid.

## ■ HALF-SHIELDED TYPE

### 22200 series

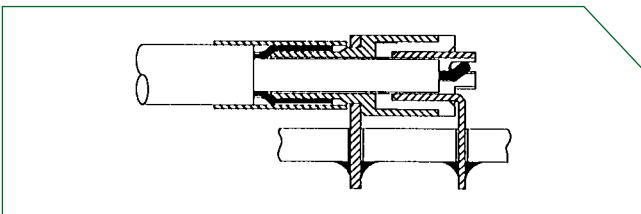
---



- P.C.B. termination thickness 2.4 mm.
- Cable groups A, D, G [see page 2].
- **Solder** braid.

### B 350 C series

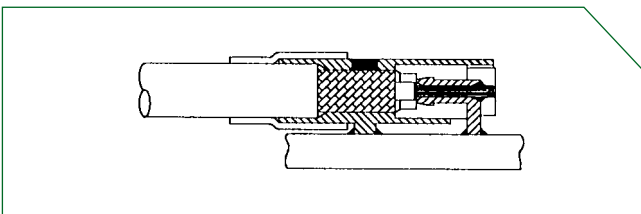
---



- P.C.B. termination thickness 1.6 to 3.2 mm.
- Cable groups A, B, D, G, H [see page 2].
- **Solder** or **crimp** braid.

### B 270 C series

---

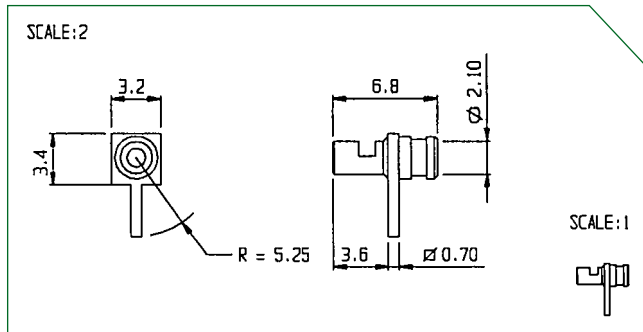


- SMT termination.
- Cable groups A, B, C, E [see page 2].
- **Solder** braid.

# P.C.B. CABLE TERMINATIONS

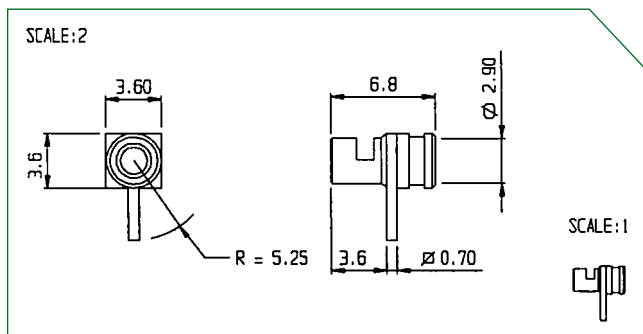
## Economic type - 22200 series

### ■ SOLDER STYLES



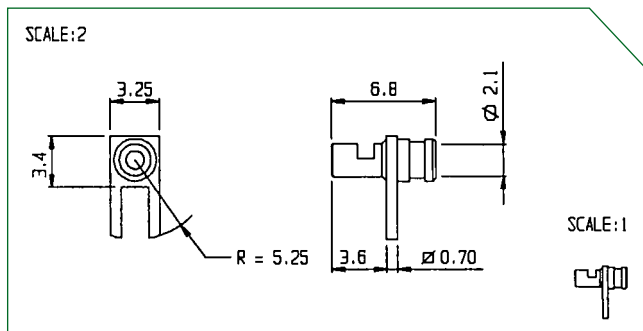
P.C.B. thickness mm	Reference	Cable Groups	Assembly	P.C.B. mounting details
2.4	22202 - 110	A	M10	T2

Termination length = 3.6



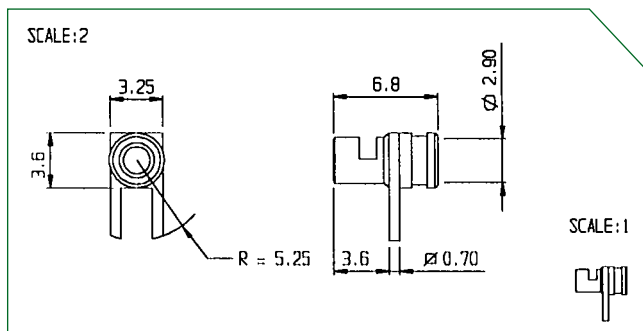
P.C.B. thickness mm	Reference	Cable Groups	Assembly	P.C.B. mounting details
2.4	22203 - 110	G - D	M10	T2

Termination length = 3.6



P.C.B. thickness mm	Reference	Cable Groups	Assembly	P.C.B. mounting details
2.4	22204 - 110	A	M10	T6

Termination length = 3.6



P.C.B. thickness mm	Reference	Cable Groups	Assembly	P.C.B. mounting details
2.4	22205 - 110	G - D	M10	T6

Termination length = 3.6

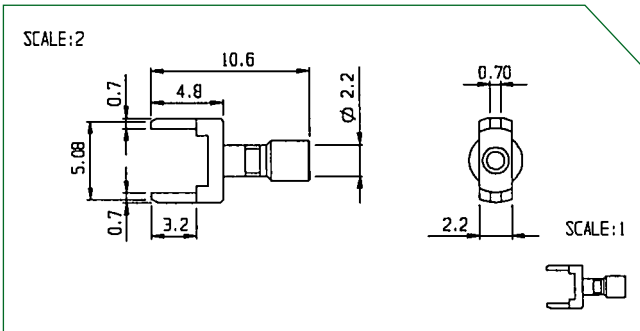
Gold plated styles on request : replace 110 by 131



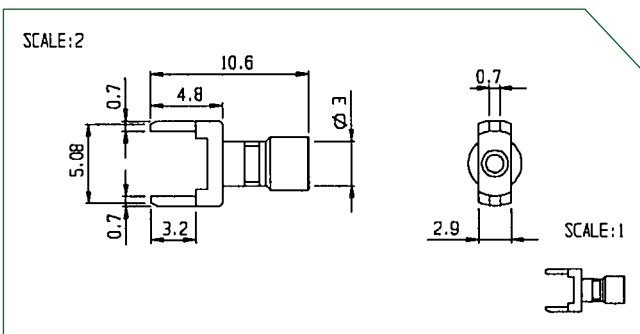
# P.C.B. CABLE TERMINATIONS

## Economic type - 22200 and 22300 series

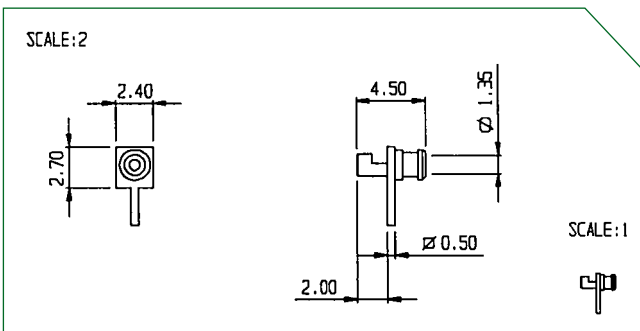
### ■ SOLDER STYLES



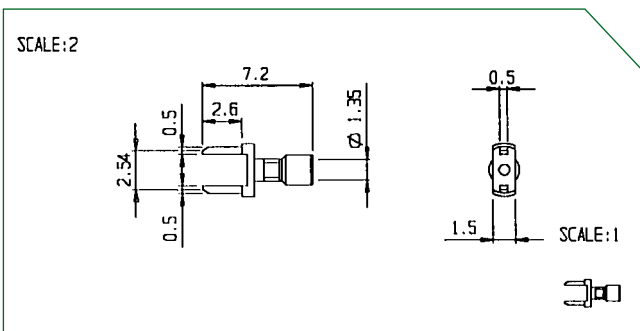
P.C.B. thickness mm	Reference	Cable Groups	Assembly	P.C.B. mounting details
2.4	22206 - 110	A	M11	T3



P.C.B. thickness mm	Reference	Cable Groups	Assembly	P.C.B. mounting details
2.4	22207 - 110	G - D	M11	T3



P.C.B. thickness mm	Reference	Cable Groups	Assembly	P.C.B. mounting details
2.4	22327 - 110	C	M10	T2



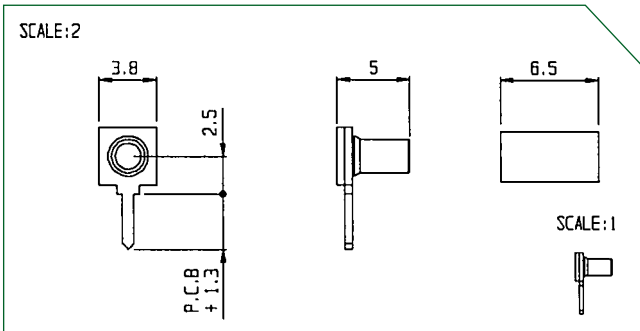
P.C.B. thickness mm	Reference	Cable Groups	Assembly	P.C.B. mounting details
2.4	22326 - 110	C	M12	T4

Gold plated styles on request : replace 110 by 131

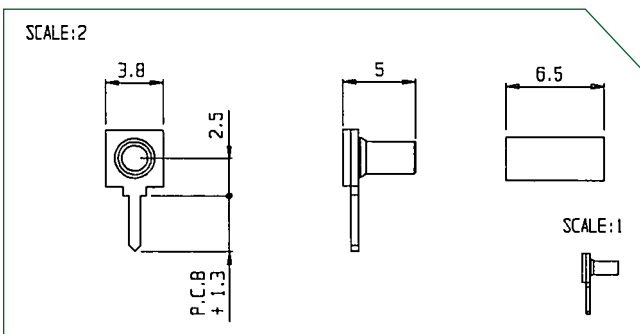
# P.C.B. CABLE TERMINATIONS

## Economic type - B 514 C series

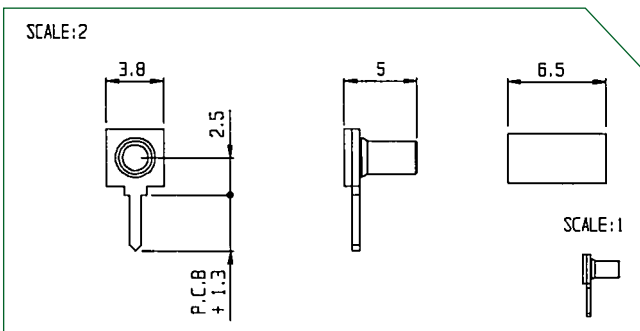
### ■ CRIMP STYLES



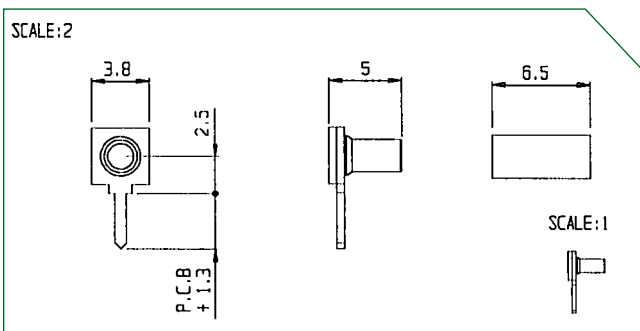
P.C.B. thickness mm	Reference	Cable Groups	Assembly	P.C.B. mounting details
2.0	<b>B 514 C 01</b>	<b>G</b>	M20	T2
4.5	<b>B 514 C 21</b>	<b>A</b>	M20	T2



P.C.B. thickness mm	Reference	Cable Groups	Assembly	P.C.B. mounting details
1.6	<b>B 514 C 03</b>	<b>A</b>	M20	T2
3.2	<b>B 514 C 23</b>	<b>A</b>	M20	T2



P.C.B. thickness mm	Reference	Cable Groups	Assembly	P.C.B. mounting details
1.6	<b>B 514 C 07</b>	<b>B</b>	M20	T2
3.2	<b>B 514 C 27</b>	<b>B</b>	M20	T2

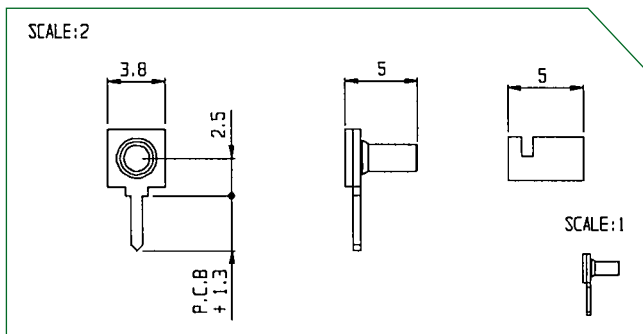


P.C.B. thickness mm	Reference	Cable Groups	Assembly	P.C.B. mounting details
1.6	<b>B 514 C 31</b>	<b>H</b>	M20	T2
3.2	<b>B 514 C 51</b>	<b>H</b>	M20	T2

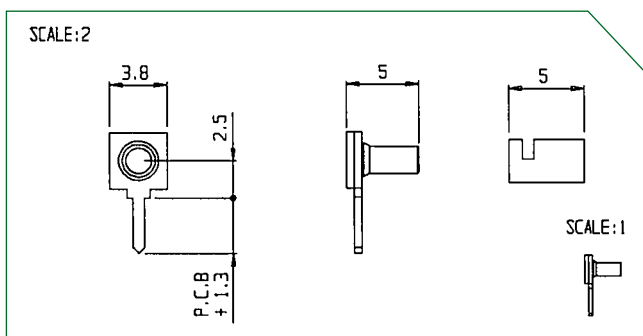
# P.C.B. CABLE TERMINATIONS

## Economic type - B 514 C series

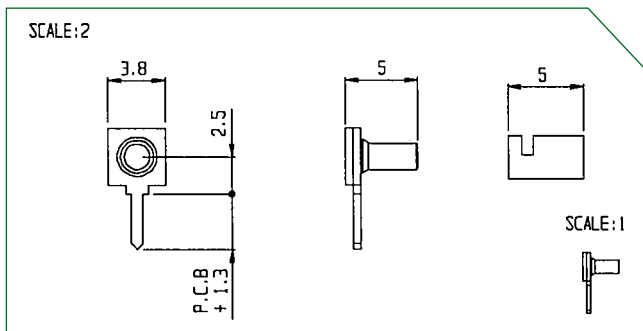
### ■ SOLDER STYLES



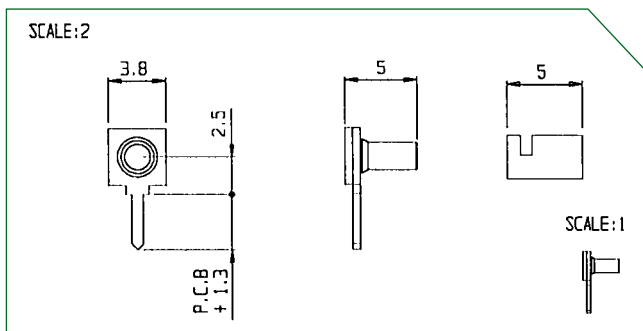
P.C.B. thickness mm	Reference	Cable Groups	Assembly	P.C.B. mounting details
1.6	<b>B 514 C 02</b>	<b>G</b>	M20	T2
3.2	<b>B 514 C 22</b>	<b>G</b>	M20	T2



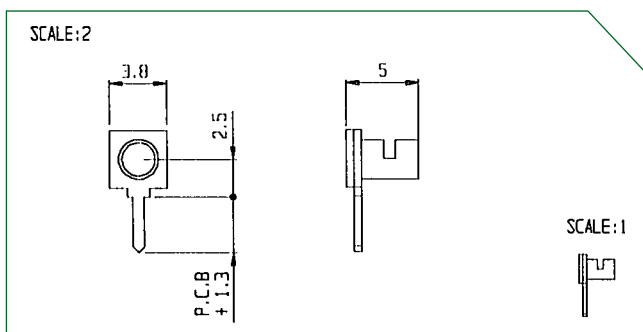
P.C.B. thickness mm	Reference	Cable Groups	Assembly	P.C.B. mounting details
1.6	<b>B 514 C 04</b>	<b>A</b>	M20	T2
3.2	<b>B 514 C 24</b>	<b>A</b>	M20	T2



P.C.B. thickness mm	Reference	Cable Groups	Assembly	P.C.B. mounting details
1.6	<b>B 514 C 08</b>	<b>B</b>	M20	T2
3.2	<b>B 514 C 28</b>	<b>B</b>	M20	T2



P.C.B. thickness mm	Reference	Cable Groups	Assembly	P.C.B. mounting details
1.6	<b>B 514 C 32</b>	<b>H</b>	M20	T2
3.2	<b>B 514 C 52</b>	<b>H</b>	M20	T2

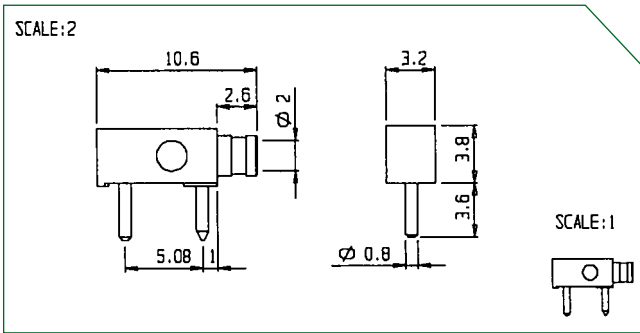


P.C.B. thickness mm	Reference	Cable Groups	Assembly	P.C.B. mounting details
1.6	<b>B 514 C 34</b>	<b>J</b>	M21	T2
3.2	<b>B 514 C 54</b>	<b>J</b>	M21	T2

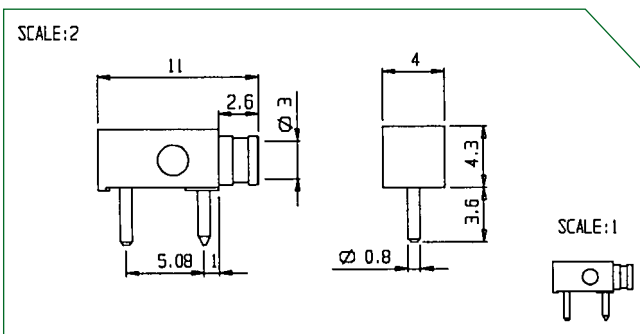
# P.C.B. CABLE TERMINATIONS

## Shielded type - 5600 series

### ■ SOLDER STYLES



P.C.B. thickness mm	Reference	Cable Groups	Assembly	P.C.B. mounting details
2.4	5600 A - 110	A	M30	T1

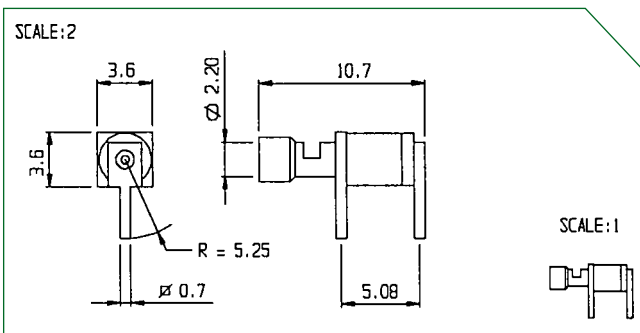


P.C.B. thickness mm	Reference	Cable Groups	Assembly	P.C.B. mounting details
2.4	5600 B - 110	G - D	M30	T1

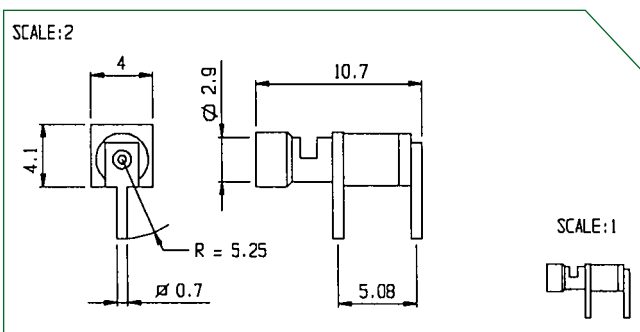
Gold plated styles on request : replace 110 by 131

## Half-shielded - 22200 series

### ■ SOLDER STYLES



P.C.B. thickness mm	Reference	Cable Groups	Assembly	P.C.B. mounting details
2.4	22200 - 110	A	M40	T1



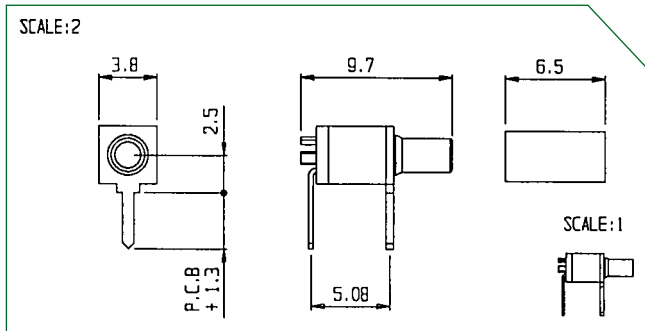
P.C.B. thickness mm	Reference	Cable Groups	Assembly	P.C.B. mounting details
2.4	22201 - 110	G - D	M40	T1

Gold plated styles on request : replace 110 by 131

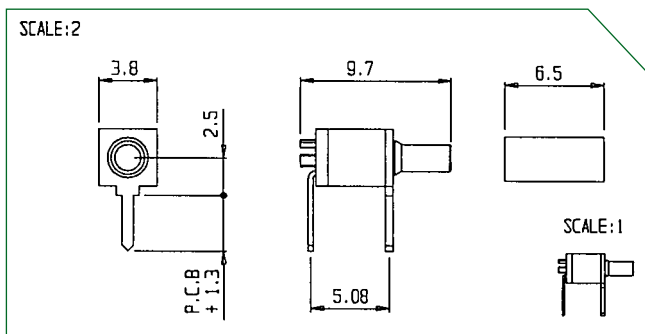
# P.C.B. CABLE TERMINATIONS

## Half-shielded type - B 350 C series

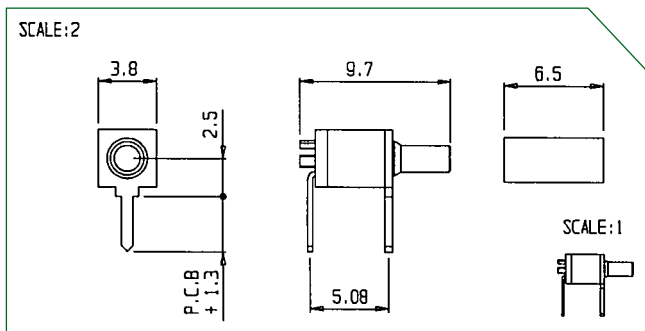
### ■ CRIMP STYLES



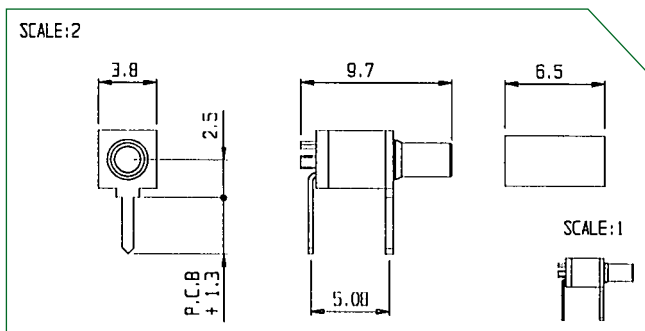
P.C.B. thickness mm	Reference	Cable Groups	Assembly	P.C.B. mounting details
1.6	B 350 C 01	G - D	M50	T1
3.2	B 350 C 21	G - D	M50	T1



P.C.B. thickness mm	Reference	Cable Groups	Assembly	P.C.B. mounting details
1.6	B 350 C 03	A	M50	T1
3.2	B 350 C 23	A	M50	T1



P.C.B. thickness mm	Reference	Cable Groups	Assembly	P.C.B. mounting details
1.6	B 350 C 07	B	M50	T1
3.2	B 350 C 27	B	M50	T1

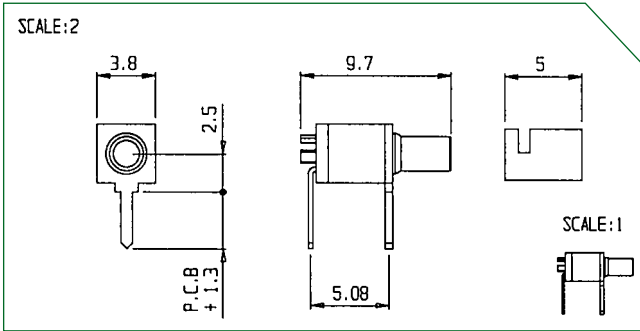


P.C.B. thickness mm	Reference	Cable Groups	Assembly	P.C.B. mounting details
1.6	B 350 C 31	H	M50	T1
3.2	B 350 C 51	H	M50	T1

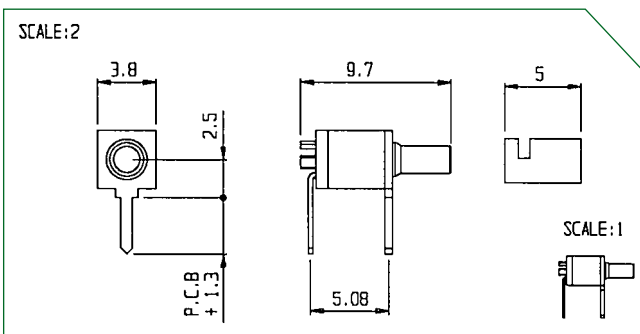
# P.C.B. CABLE TERMINATIONS

## Half-shielded type - B 350 C series

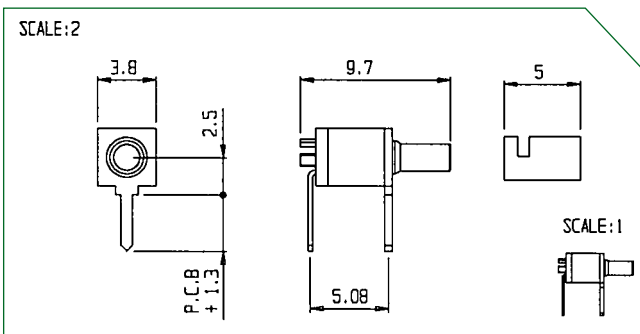
### ■ SOLDER STYLES



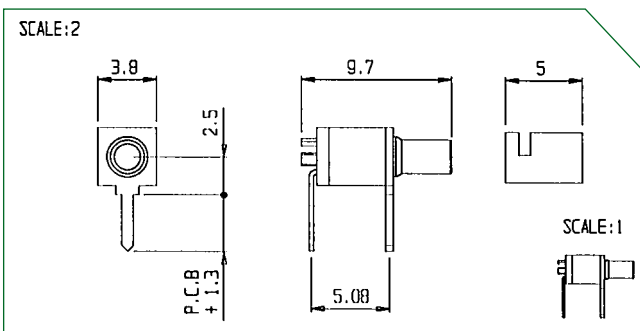
P.C.B. thickness mm	Reference	Cable Groups	Assembly	P.C.B. mounting details
1.6	B 350 C 02	G - D	M50	T1
3.2	B 350 C 22	G - D	M50	T1



P.C.B. thickness mm	Reference	Cable Groups	Assembly	P.C.B. mounting details
1.6	B 350 C 04	A	M50	T1
3.2	B 350 C 24	A	M50	T1



P.C.B. thickness mm	Reference	Cable Groups	Assembly	P.C.B. mounting details
1.6	B 350 C 08	B	M50	T1
3.2	B 350 C 28	B	M50	T1

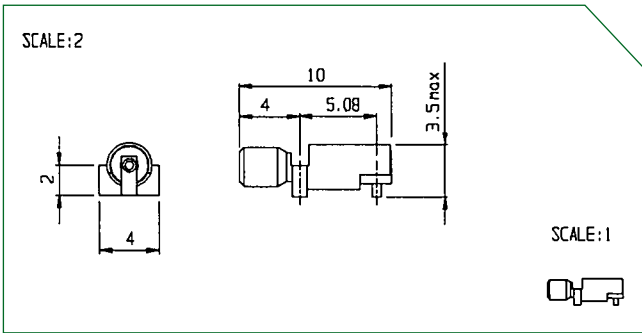


P.C.B. thickness mm	Reference	Cable Groups	Assembly	P.C.B. mounting details
1.6	B 350 C 32	H	M50	T1
3.2	B 350 C 52	H	M50	T1

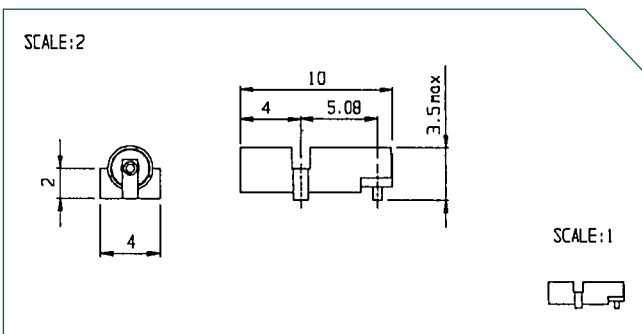
# SMT CABLE TERMINATIONS

## Half-shielded type - B 270 C series

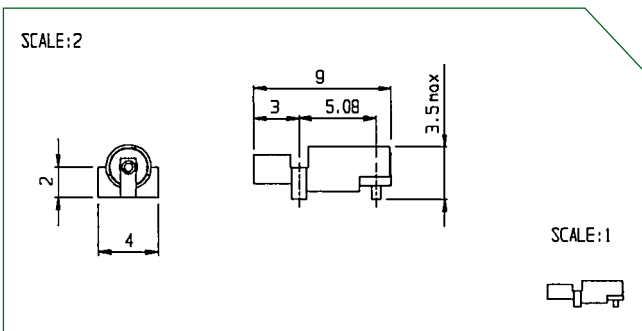
### ■ SOLDER STYLES



Reference	Cable Groups	Assembly	P.C.B. mounting details
B 270 C 01	<b>A</b>	M60	T5



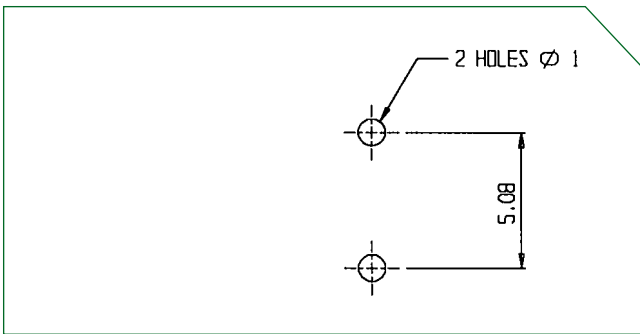
Reference	Cable Groups	Assembly	P.C.B. mounting details
B 270 C 03	<b>B</b>	M60	T5



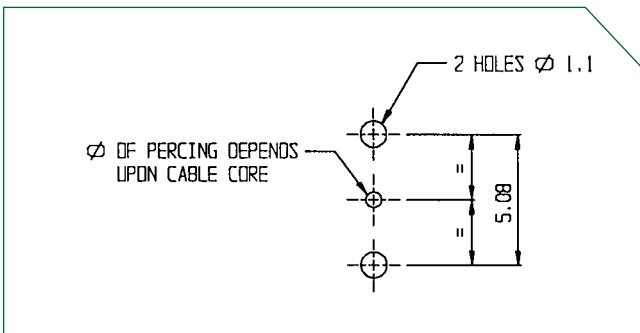
Reference	Cable Groups	Assembly	P.C.B. mounting details
B 270 C 04	<b>E - C</b>	M60	T5

# P.C.B. MOUNTING DETAILS (DIMENSIONS IN MM)

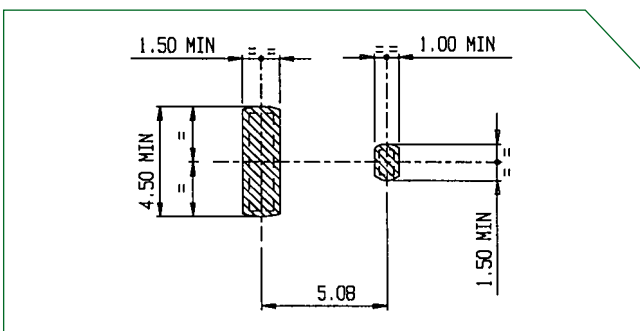
## T1



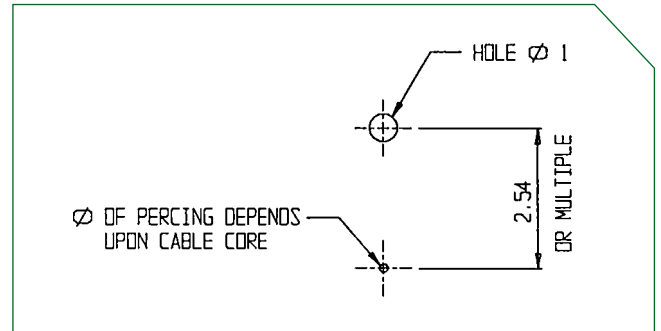
## T3



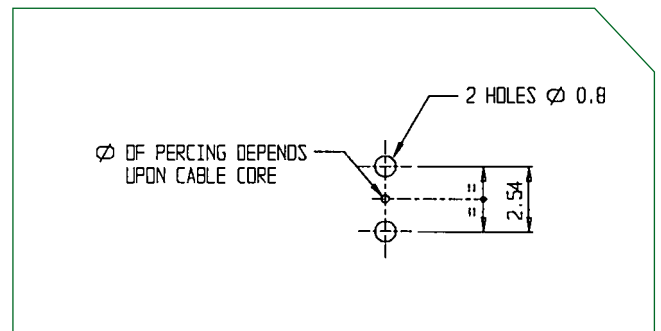
## T5



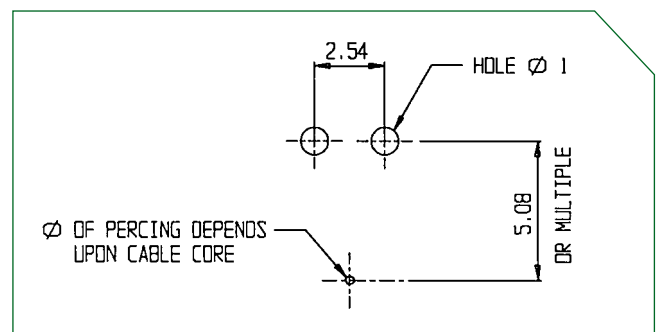
## T2



## T4



## T6



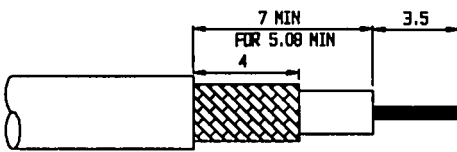


# ASSEMBLY PROCEDURES

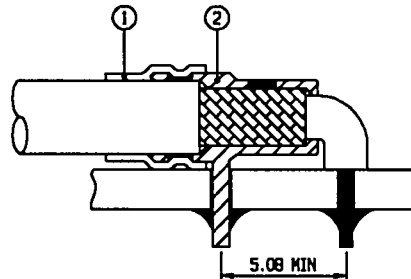
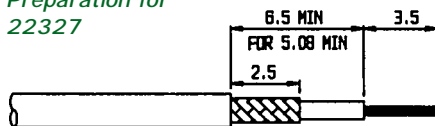
## ■ ASSEMBLY PROCEDURES M10

### ECONOMIC – 22200 and 22300 series

Preparation for  
22202 - 22203 - 22204 - 22205



Preparation for  
22327



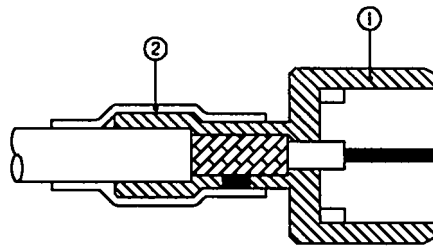
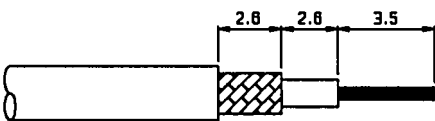
22202  
22203  
22204  
22205  
22327

- Slide the heat shrinkable sleeve (1) on the cable.
- Strip the cable.
- Insert cable into the body (2).
- Solder [Sn.Pb 60/40] the braid to the body (2).
- Slide back the heat shrinkable sleeve (1) and shrink it.

## ■ ASSEMBLY PROCEDURES M11

### ECONOMIC – 22200 series

22206  
22207

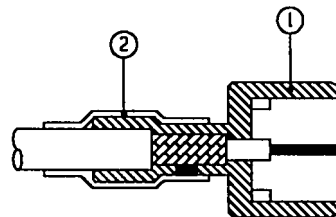
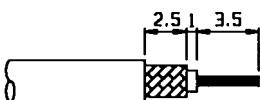


- Slide the heat shrinkable sleeve (2) on the cable.
- Strip the cable.
- Insert cable into the body (1).
- Solder [Sn.Pb 60/40] the braid to the body (1).
- Slide back the heat shrinkable sleeve (2) and shrink it.

## ■ ASSEMBLY PROCEDURES M12

### ECONOMIC – 22300 series

22326

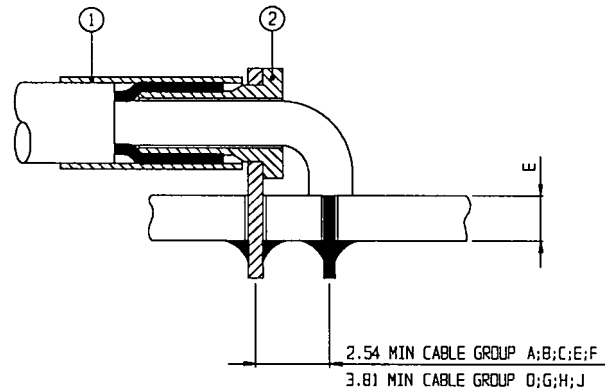
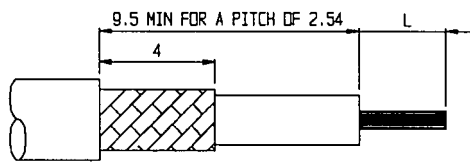


- Slide the heat shrinkable sleeve (2) on the cable.
- Strip the cable.
- Insert cable into the body (1).
- Solder [Sn.Pb 60/40] the braid to the body (1).
- Slide back the heat shrinkable sleeve (2) and shrink it.

# ASSEMBLY PROCEDURES

## ■ ASSEMBLY PROCEDURES M20

ECONOMIC – B 514 C serie



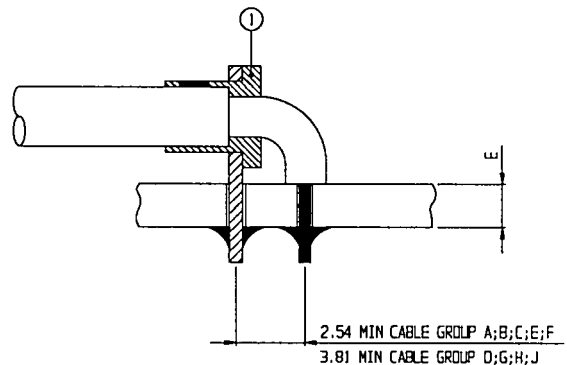
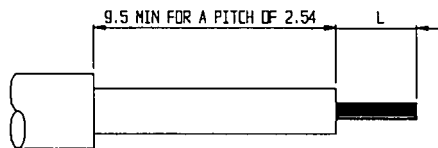
$$E = L + 1,3 \text{ mm}$$

- Strip the cable.
- Insert cable into the body (2).
- Slide back the sleeve (1) on the braid.
- Solder (Sn.Pb 60/40) the grounding braid to the body (2) in the sleeve (1) [solder styles].
- Crimp the sleeve with the A TI crimping tool B 480 C 24 HEX. of \*A/F [\*see page 19] [crimp styles].

## ■ ASSEMBLY PROCEDURES M21

ECONOMIC – B 514 C serie

B 514 C 34  
B 514 C 54



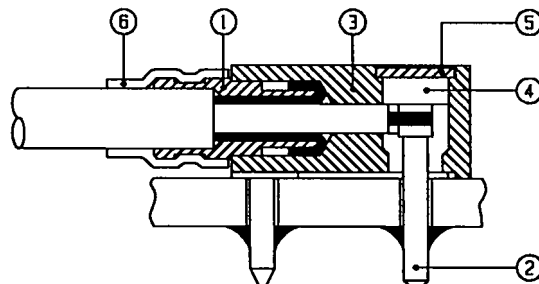
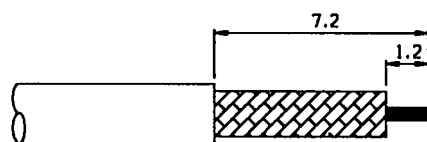
$$E = L + 1,3 \text{ mm}$$

- Strip the cable.
- Insert cable into the body (1).
- Solder (Sn.Pb 60/40) the braid to the body

## ■ ASSEMBLY PROCEDURES M30

SHIELDED – 5600 serie

5600 A  
5600 B



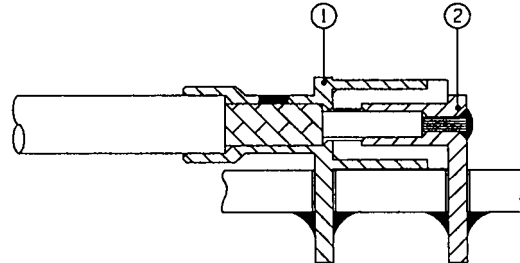
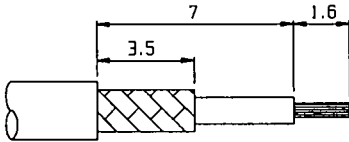
- Strip the cable.
- Slide the heat shrinkable sleeve (6) on the cable.
- Tin the central core.
- Comb out the grounding braid.
- Cover with the sleeve (1), pull back the braid and cut protruding strands.
- Insert the body (3).
- Solder (Sn.Pb 60/40) the central core in the slot of contact (2) and the grounding braid through the chamfered lateral hole.
- Cover the contact with insulator (4).
- Fit cap (5) curved side outwards and solder (Sn.Pb 60/40).
- Slide back the heat shrinkable sleeve (6) and shrink it.

# ASSEMBLY PROCEDURES

## ■ ASSEMBLY PROCEDURES M40

### HALF-SHIELDED – 22200 series

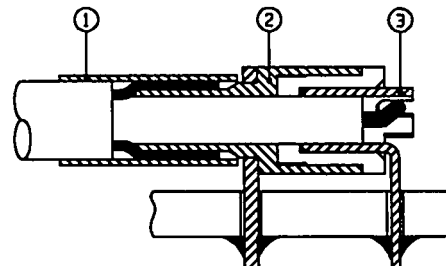
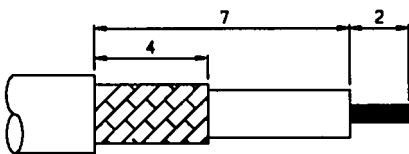
22200  
22201



- Strip the cable.
- Insert cable into the body [1].
- Solder [Sn.Pb 60/40] the braid to the body [1].
- Solder [Sn.Pb 60/40] the core to the contact [2].

## ■ ASSEMBLY PROCEDURES M50

### HALF-SHIELDED – B 350 C series

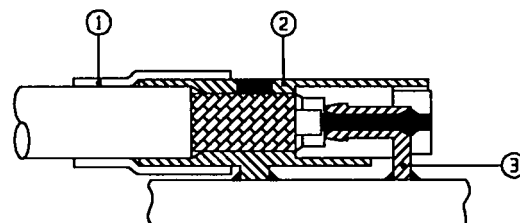
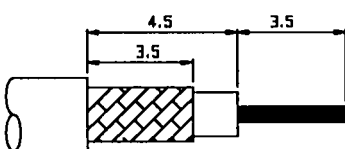


- Strip the cable.
- Insert cable into the body [2].
- Solder [Sn.Pb 60/40] the core to the contact [3].
- Slide back the sleeve [1] on the braid.
- Solder [Sn.Pb 60/40] the grounding braid to the body [2] in the sleeve [1] [solder styles].
- Crimp the sleeve with A TI crimping tool B 480 C 24 HEX. of \*A/F [\*see page 19] [crimp styles].

## ■ ASSEMBLY PROCEDURES M60

### HALF-SHIELDED – B 270 C serie

B 270 C 01  
B 270 C 03  
B 270 C 04

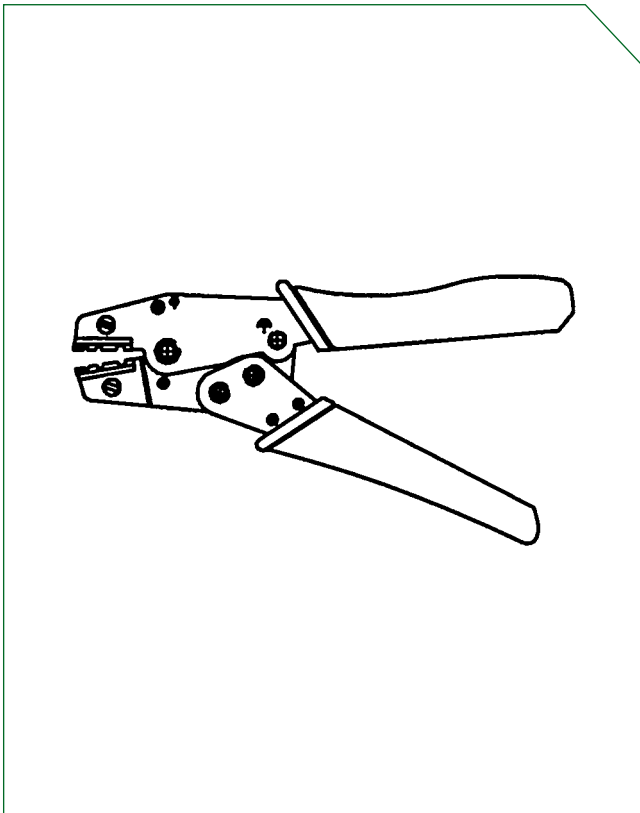


- Slide the heat shrinkable sleeve [1] on the cable.
- Strip the cable.
- Insert cable into the body [2].
- Solder [Sn.Pb 60/40] the core in the slot of contact [3] and the grounding braid to the body [2].
- Slide back the heat shrinkable sleeve [1] and shrink it.

# TOOLS

## ■ CRIMPING TOOL

### B 480 C 24



Termination Reference	Crimping Hexagon
B 514 C 01	3.00
B 514 C 03	2.67
B 514 C 07	3.00
B 514 C 21	3.00
B 514 C 23	2.67
B 514 C 27	3.00
B 514 C 31	3.00
B 514 C 51	3.00
B 350 C 01	3.00
B 350 C 03	2.67
B 350 C 07	3.00
B 350 C 21	3.00
B 350 C 23	2.67
B 350 C 27	3.00
B 350 C 31	3.00
B 350 C 51	3.00





## COAXIAL CONNECTORS MICROMIN 2 GHz

ULTRA MINIATURE 50  $\Omega$  SNAP

# INTRODUCTION

---



## Features

- Miniature coaxial connectors snap-on depending on models : with or without antirotation.
- Rated impedance : 50  $\Omega$ .
- Operating frequency : 2 GHz.
- Extremely reduced dimensions.
- Protusion less than 5 mm above panel (our photo).
- Easy to install, in spite of miniaturization.
- Low weight and good holding capability (extraction force 10 to 30 Newtons), therefore vibration performance excellent.
- Tests at 350 g for 45 minutes : no remark
- Terminology, construction regulations and tests derived from french standard NF C 93562 (KMC).
- General tests according to standard NF C 93001.
- According to standard CECC 22220-22221.

## Construction

- Brass body, nickel and gold plated.
- Annealed beryllium bronze contacts with gold plating.
- Insulator : PTFE.

## Characteristics

### Environmental and Mechanical

- |                                       |                              |
|---------------------------------------|------------------------------|
| • Operating temperature range : ..... | -55°C + 125°C                |
| • Damp heat – severity 5 : .....      | 21 days - R > 200 M $\Omega$ |
| • Salt spray : .....                  | 48 hours                     |
| • Mechanical endurance : .....        | 500 operations               |
| • Pulling force on cable : .....      | > 58 N                       |

### Electrical

- |                                 |                   |
|---------------------------------|-------------------|
| • Working voltage : .....       | 750 Vrms 50 Hz    |
| • Insulation resistance : ..... | > 1000 M $\Omega$ |
| • Contact resistance : .....    | < 6 m $\Omega$    |

Nota : All sizes are in millimetres.

# TYPE INDEX

## ■ COAXIAL CONNECTORS MICROMIN 2 GHZ

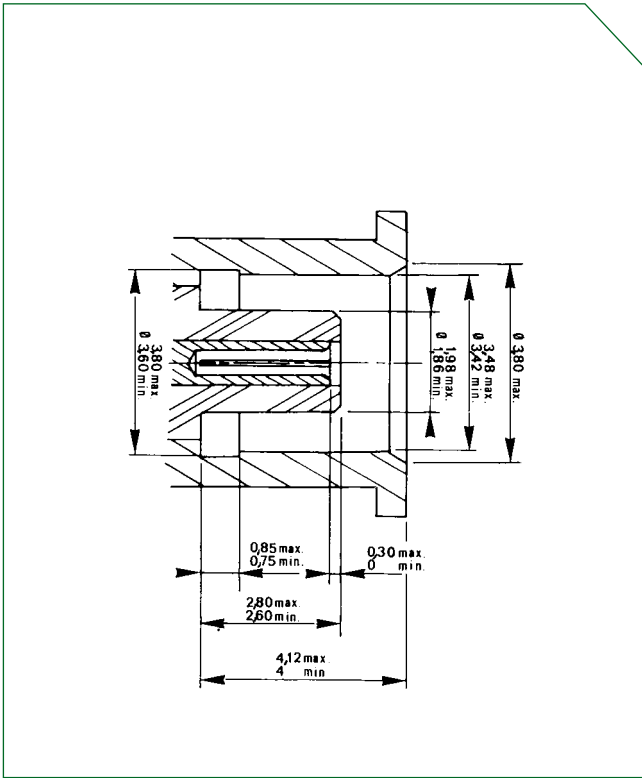
TYPES	REFERENCES							PAGES	see p. 2
	Cable soldering	Cable screwing	Cable crimping	PCB soldering	Panel mounted	Bulk head mounted	50 Ohms load		CABLE GROUPS
RIGHT ANGLE MALE PLUG	20524 S1	20524 D	20524 SC12					24	A
	20524 S14							24	B
	20524 S5							24	C
							20524 S7	27	
	* 22150 S1 (cable KX 22)								G
	* 22116 S1 (cables UT 85 and RG 188 A/U)								J - G
STRAIGHT MALE PLUG		20524 S2	20524 SC22					25	A
		20524 S8						25	C
							20524 S6	27	
		* 21642 S2 (cable UT 85)							J
STRAIGHT FEMALE PLUG					20524 S3		25		
STRAIGHT FEMALE RECEPTACLE						20524 R1		25	
				20524 R3				26	
				22364 R3				26	
HERMATICALLY SEALED STRAIGHT FEMALE RECEPTACLE					20524 R5		26		
RIGHT ANGLE FEMALE RECEPTACLE				20524 R4		20524 R2		26	
STRAIGHT FEMALE RECEPTACLE				20524 R6				27	
STRAIGHT MALE RECEPTACLE				20524 R7				27	
ADAPTER	20524 ES							27	

\* Please take advice

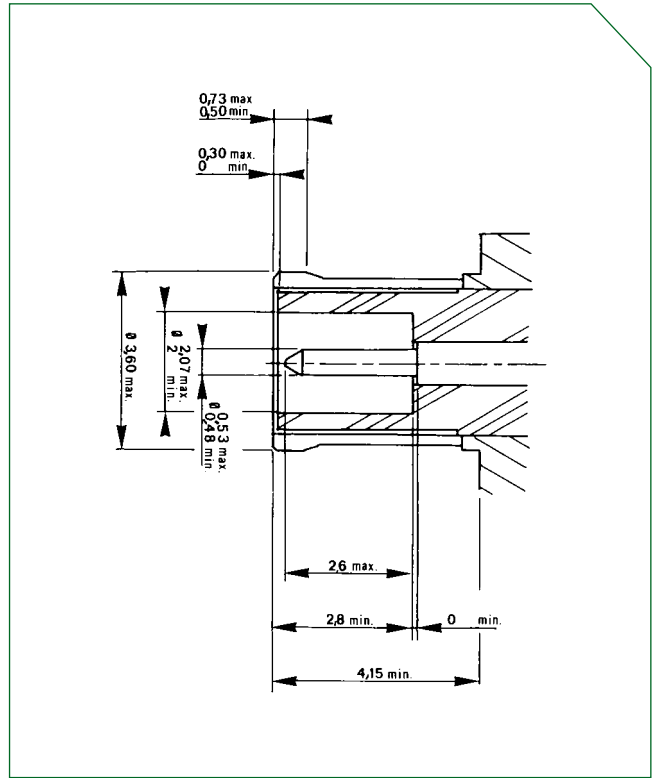


# INTERCHANGEABILITY

## ■ FEMALE



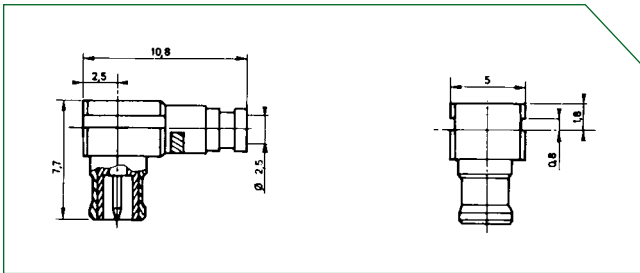
## ■ MALE



# COAXIAL CONNECTORS MICROMIN 2 GHZ

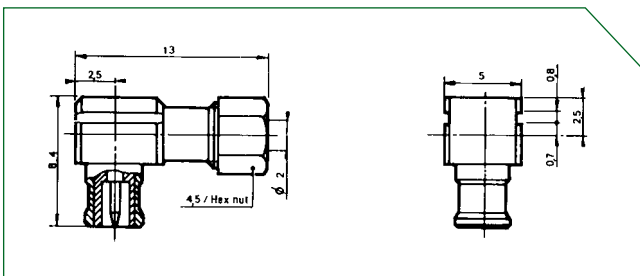
## ■ RIGHT ANGLE MALE PLUG

### 20524 S1 serie



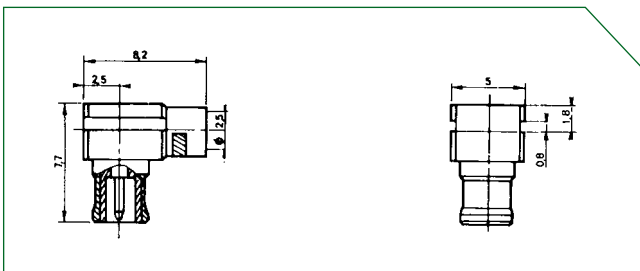
- Cable attachment : soldered.
- For coaxial cables of OD 2 mm.
- W eight : 0.93 g.
- Assembly : page 29.
- *22150 S1 for cable KX 22 - Please take advice.*

### 20524 D serie



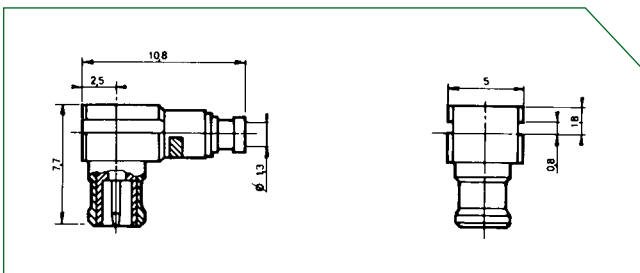
- Cable not attached (removable).
- For coaxial cables of OD 2 mm.
- W eight : 1.43 g.
- Assembly : page 30.

### 20524 S14 serie



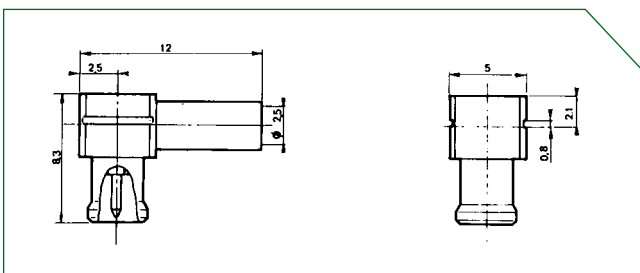
- Cable attachment : soldered.
- For coaxial cables of OD 2.5 mm.
- W eight : 0.87 g.
- Assembly : page 30.
- *22116 S1 for cables UT 85 and RG 188 A/U - Please take advice.*

### 20524 S5 serie



- Cable attachment : soldered.
- For coaxial cables of OD 1.3 mm.
- W eight : 0.93 g.
- Assembly : page 29.

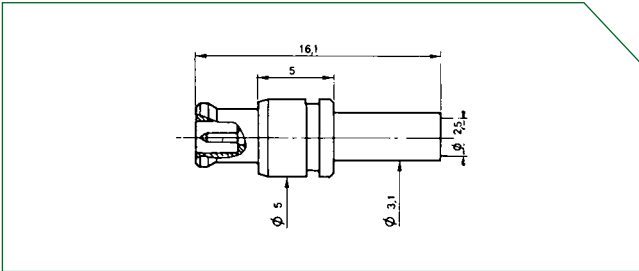
### 20524 SC12 serie



- Cable attachment : crimped.
- For coaxial cables of OD 2 mm.
- W eight : 1.02 g.
- Assembly : page 31.

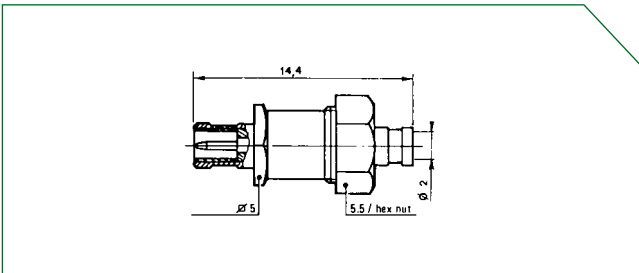
## ■ STRAIGHT MALE PLUG

### 20524 SC 22 serie



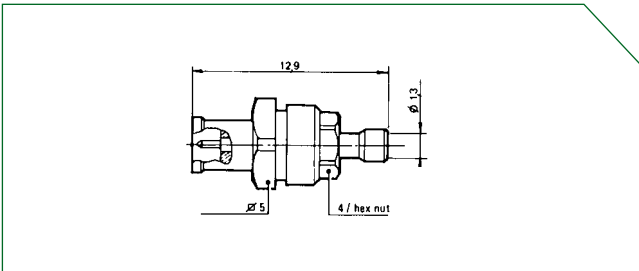
- Cable attachment : crimped.
- For coaxial cables of OD 2 mm.
- Weight : 0.90 g.
- Assembly : page 32.

### 20524 S2 serie



- Cable not attached.
- For coaxial cables of OD 2 mm.
- Weight : 1 g.
- Assembly : page 31.
- *21642 S2 for cable UT 85 - Please take advice.*

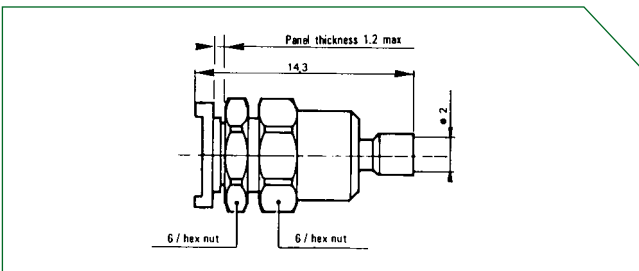
### 20524 S8 serie



- Cable not attached.
- For coaxial cables of OD 1.3 mm.
- Weight : 1 g.
- Assembly : page 32.

## ■ PANEL STRAIGHT FEMALE SOCKET with antirotation

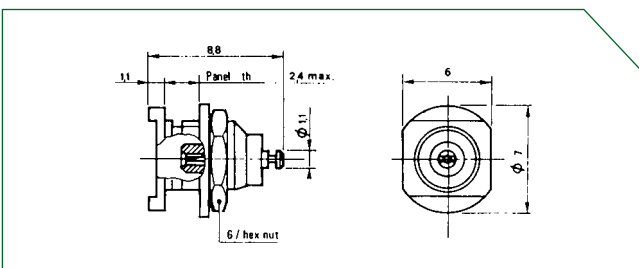
### 20524 S3 serie



- Cable attachment : soldered.
- For coaxial cables of OD 2 mm.
- Weight : 0.90 g.
- Assembly : page 31.
- Drilling plan A : page 29.

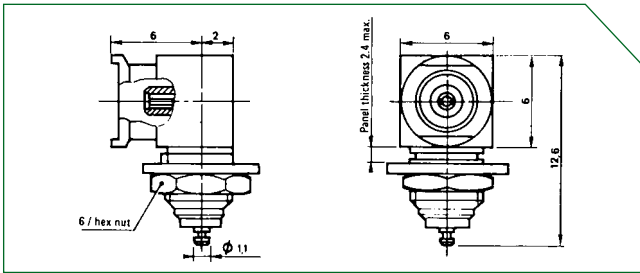
## ■ STRAIGHT FEMALE RECEPTACLE bulkhead mounted with antirotation

### 20524 R1 serie



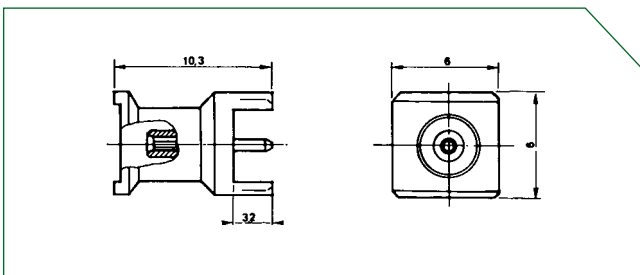
- Weight 0.77 g.
- Drilling plan A : page 29.
- *22364 R1 without antirotation - Please take advice.*

■ RIGHT ANGLE FEMALE RECEPTABLE bulkhead mounted with antirotation  
20524 R2 serie



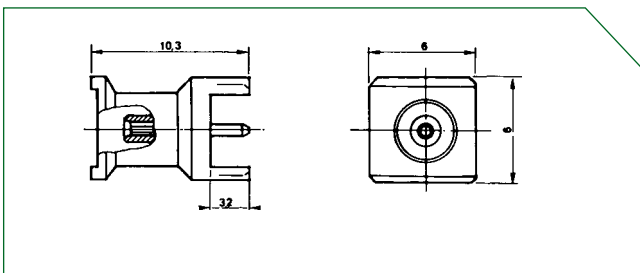
- Weight : 2 g.
- Drilling plan A : page 29.
- *22364 R2 without antirotation - Please take advice.*

■ P.C.B. STRAIGHT FEMALE RECEPTABLE with antirotation  
20524 R3 serie



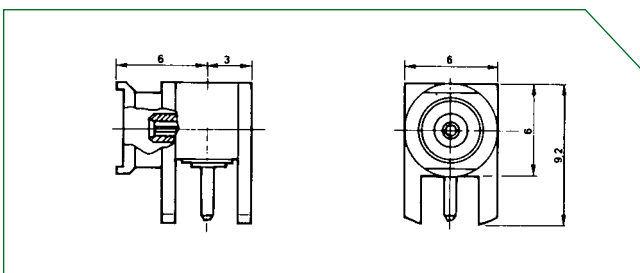
- Installation : pitch 5.08 mm.
- Weight : 0.97 g.
- Drilling plan B : page 29.

■ P.C.B. STRAIGHT FEMALE RECEPTABLE without antirotation  
22364 R3 serie



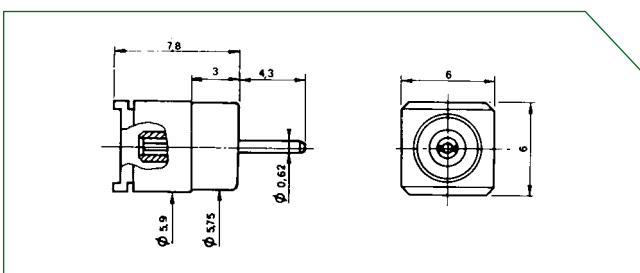
- Installation : pitch 5.08 mm.
- Weight : 0.97 g.
- Drilling plan B : page 29.

■ P.C.B. RIGHT ANGLE FEMALE RECEPTABLE with antirotation  
20524 R4 serie



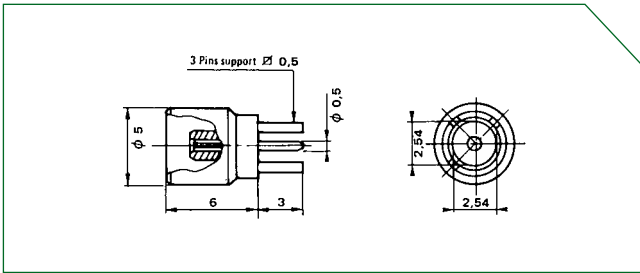
- Installation : pitch 5.08 mm.
- Weight : 1.46 g.
- Drilling plan B : page 29.

■ HERMETICALLY SEALED STRAIGHT FEMALE RECEPTABLE with antirotation  
20524 R5 serie



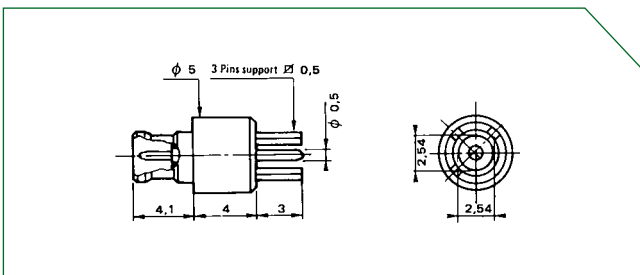
- Soldered body , sealing by glass-metal weld.
- Weight : 1.2 g.
- Proof to 10<sup>-8</sup> Helium atmosphere.
- Drilling panel : Ø 5,75<sup>+0.05</sup>.

## ■ P.C.B. STRAIGHT FEMALE RECEPTACLE without antirotation 20524 R6 serie



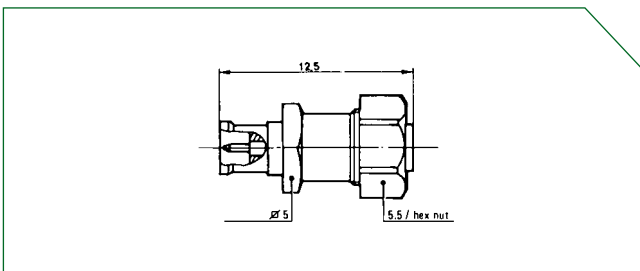
- Installation : pitch 2.54 mm.
- Weight : 0.75 g.
- Drilling plan C : page 29.

## ■ P.C.B. STRAIGHT MALE RECEPTACLE without antirotation 20524 R7 serie



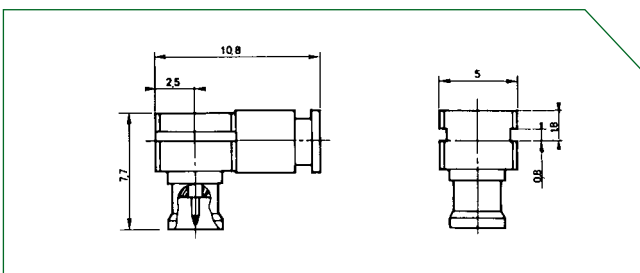
- Installation : pitch 2.54 mm.
- Weight : 0.75 g.
- Drilling plan C : page 29.

## ■ 50 Ω STRAIGHT LOAD 20524 S6 serie



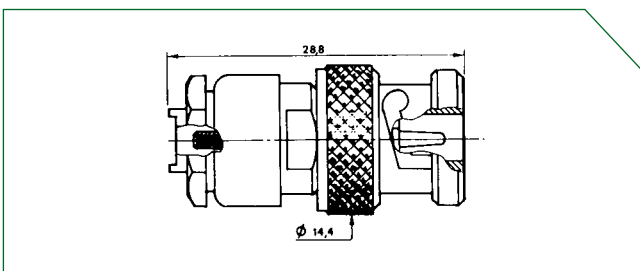
- Straight male plug.
- Permissible power : 1/4 W 20°C.
- Weight : 1 g.

## ■ 50 Ω RIGHT ANGLE LOAD 20524 S7 serie



- Angle male plug.
- Permissible power : 1/4 W 20°C.
- Weight : 1 g.

## ■ MICROMIN FEMALE/BNC MALE ADAPTER 20524 ES serie

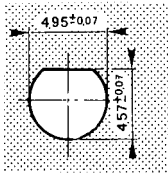


# DRILLING PLAN - ASSEMBLY PROCEDURES

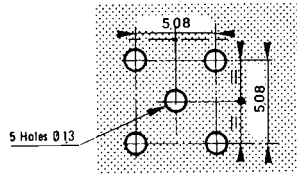
## ■ DRILLING PLAN

20524 OC17

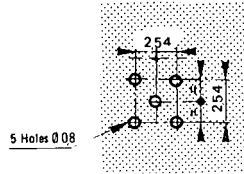
**Type A**  
for panel



**Type B**  
for P.C.B.

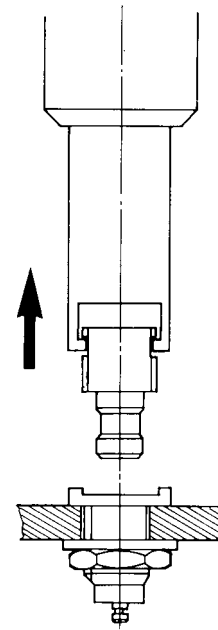
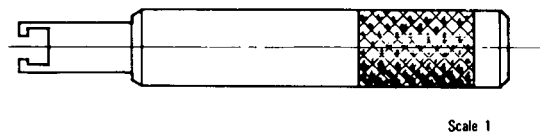


**Type C**  
for P.C.B.



### Extraction tool used with plugs

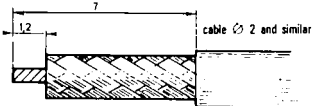
- 20524 D
- 20524 S1
- 20524 S5
- 20524 S7
- 20524 S14
- 20524 SC 12
- 22150 S1
- 22116 S1



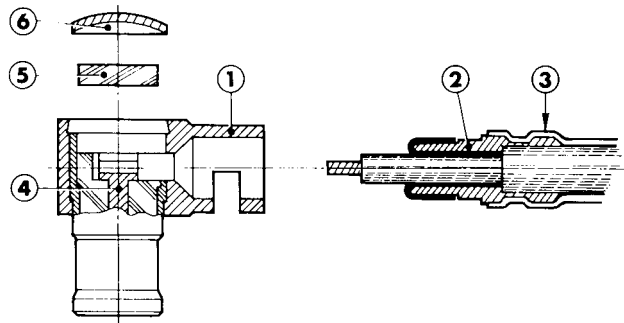
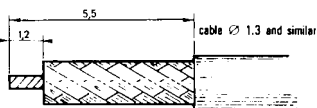
## ■ ASSEMBLY PROCEDURES

### RIGHT ANGLE MALE PLUG with soldered cable attachment

#### Cable preparation plug 20524 S1



#### Cable preparation plug 20524 S5



- Slide the heat-shrinkable tubing (3).
- Comb out the cable braid.
- Fit the grounding cap (2) against the cable sheath.
- Fold back the braid and cut off protruding strands if necessary.
- Tin the center core.
- Insert the cable and grounding cap assembly (2) in body (1).
- Solder the core of the cable to contact (4).
- Solder the cable braid to body (1).  
The solder should make the coupling between body (1), cable braid and grounding cap (2).
- Fit insulator (5).
- Fit washer (6) and stake by striking lightly with punch at center (assembly tool 20524 OC 18).
- Fit and shrink the tubing (3).

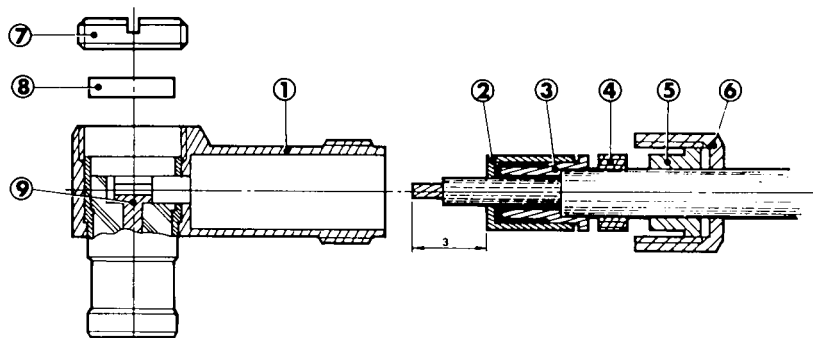
# ASSEMBLY PROCEDURES

## ■ ASSEMBLY PROCEDURES

### RIGHT ANGLE MALE PLUG with nut type cable attachment

20524 D

#### Cable preparation



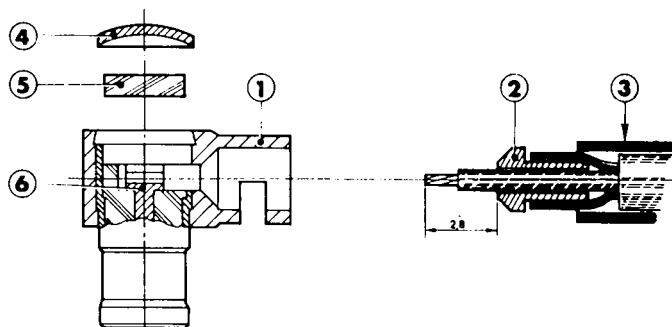
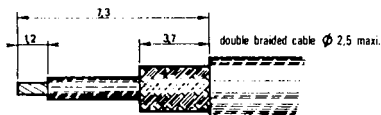
- Fit back nut [6], and clamp [5] together with seal [4].
- Comb out the cable braid.
- Fit grounding cap [3] against the cable sheath.
- Fold back the braid and cut off protruding strands if necessary.
- Fit the backing cap [2].
- Insert in the central core.
- Insert the cable, grounding cap assembly [3] and backing cap [2] in body [1].
- Fit and tighten nut [6].
- Solder the central core to contact [9].
- Fit insulator [8].
- Tighten nut [7].

## ■ ASSEMBLY PROCEDURES

### RIGHT ANGLE MALE PLUG for double braided cable

20524 S14

#### Cable preparation



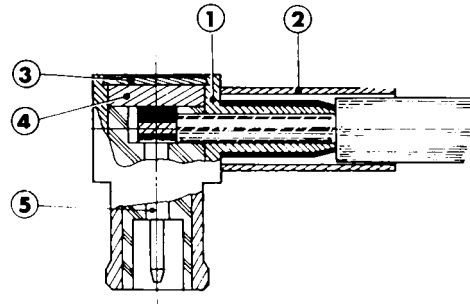
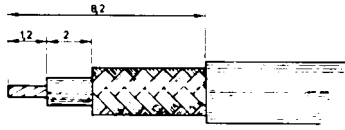
- Fit heat-shrinkable tubing [3] on the cable.
- Insert grounding eyelet [2], under the braid, if necessary cut off protruding strands.
- Insert in the central core.
- Fit the cable and grounding cap assembly [2] in body [1].
- Solder the cable core to contact [6].
- Solder the cable braids to body [1].  
The solder should make the link between body [1], the cable braids and eyelet [2].
- Fit insulator [5].
- Fit washer [4] stake with slight blow of punch at center [assembly tool 20524 OC 18].
- Fit and shrink the tubing [3].

# ASSEMBLY PROCEDURES

## ■ ASSEMBLY PROCEDURES

### RIGHT ANGLE MALE PLUG with crimped cable attachment 20524 SC12

#### Cable preparation

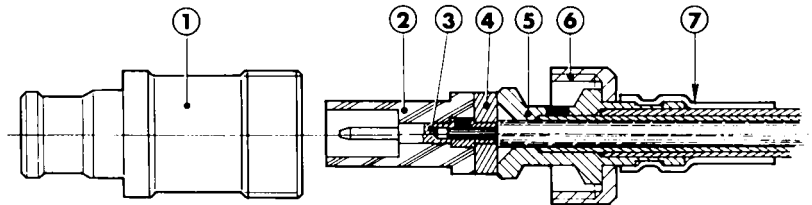
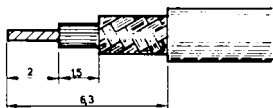


- Fit crimping sleeve (2) on the cable.
- Fit the cable in body (1).
- Tin central core and solder to contact (5).
- Draw back sleeve (2) and crimp (ATI crimping tool 40000) (2.66 /hexagon).
- Fit insulator (4).
- Fit washer (3) and stake with light blow of punch, at center (assembly tool 20524 OC 18).

## ■ ASSEMBLY PROCEDURES

### RIGHT MALE PLUG with solder and nut attachment 20524 S2

#### Cable preparation

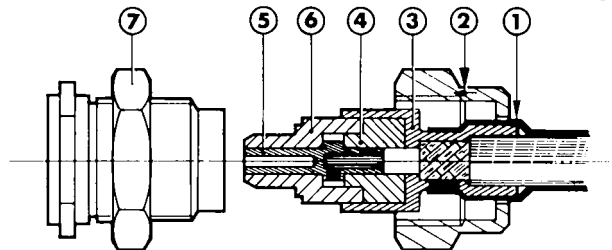
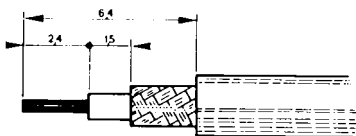


- Fit heat-shrinkable tubing (7) on cable together with back nut (6).
- Fit the grounding cap (5) against the cable sheath.
- Solder the braid and the grounding cap (5).
- Tin the central core.
- Fit insulator (4) on back of contact and solder (3).
- Insert the core of the cable in contact (3), solder.
- Cover contact (3) with insulator (2).
- Fit the assembly in body (1).
- Fully tighten back nut (6).
- Fit and shrink the tubing (7).

## ■ ASSEMBLY PROCEDURES

### PANEL FEMALE PLUG 20524 S3

#### Cable preparation



- Fit the body (7) on the panel.
- Fit heat-shrinkable tubing (1) on the cable, together with back nut (2).
- Fit the grounding cap (3) against the cable sheath.
- Solder the braid and grounding cap (3).
- Tin the central core.
- Fit insulator (4) on back of contact (5).
- Insert the core of the cable in contact (5), solder.
- Cover contact (5) with insulator (6).
- Fit the assembly in body (7).
- Fully tighten back nut (2).
- Fit and shrink the tubing (1).



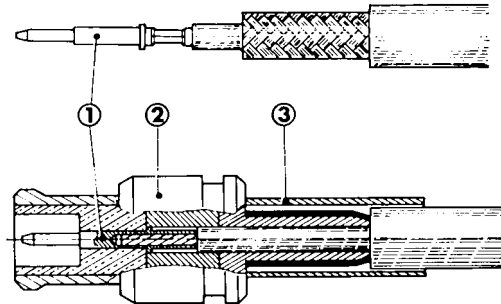
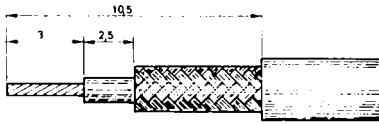
# ASSEMBLY PROCEDURES

## ■ ASSEMBLY PROCEDURES

### STRAIGHT MALE PLUG with crimped cable attachment

20524 SC22

#### Cable preparation



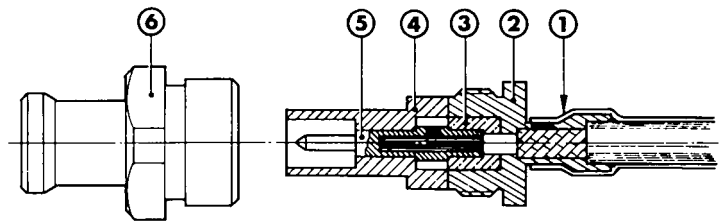
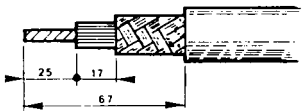
- Fit crimping sleeve [3] on the cable.
- Crimp the core of the cable to contact [1] using M22520/2-01 pliers 8, position 2 and locator A TI ref. B 11.
- Slide contact [1] into body [2] and insert the body under the braid.
- Draw back sleeve [3] over the assembly and crimp with the A TI 40000 [2.66/hexagon].

## ■ ASSEMBLY PROCEDURES

### STRAIGHT MALE CONNECTOR with solder and nut attachment

20524 S8

#### Cable preparation



- Fit heat-shrinkable tubing [1] on the cable.
- Fit grounding cap [2] against the cable sheath.
- Solder the braid on the grounding cap [2].
- Tin the central core.
- Fit insulator [3] on back of contact [5].
- Insert the cable core in contact [5] and solder.
- Cover contact [5] with insulator [4].
- Fit the assembly in body [6].
- Fully tighten grounding cap [2].
- Fit and shrink the tubing [3].

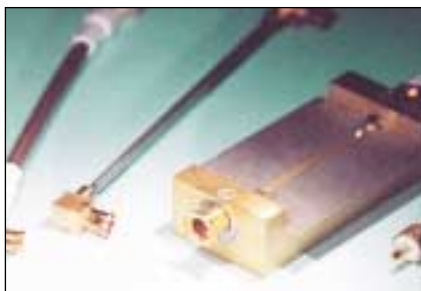


## COAXIAL CONNECTORS NANOMIN 4 GHz

ULTRA MINIATURE 50  $\Omega$  SNAP

# INTRODUCTION

---



## Features

- Ultra miniature coaxial connectors snap on :  
**B 480 C .. with antirotation**  
**B 481 C .. without antirotation.**
- Nominal impedance : 50  $\Omega$
- Operating frequency : 4 GHz (plug for cables) – 18 GHz : On request – Please consult us.
- Extremely reduced dimensions.
- 3mm protusion for SMT model.
- Easy to install, in spite of miniaturization.
- Tests derived from the CECC 22000 standard
- General tests according CEI 169 and CEI 68-1 standard.

## Construction

- Brass or Dilver P body, nickel and gold plated.
- Annealed beryllium copper contacts with gold plating.
- Dielectric PTFE or PEEK.

## Technical characteristics

### Environmental and Mechanical

- |  |                   |
|--|-------------------|
| • Operating temperature : .....        | -55°C + 125°C     |
| • Damp heat : .....                    | 21 days           |
| • Salt spray : .....                   | 96 hours          |
| • Mechanical endurance : .....         | 250 operations    |
| • Pulling force on cable KX 21 : ..... | > 30 N            |
| • Insertion force : .....              | < 20 N            |
| • Withdrawal force : .....             | 5 to 30 N         |
| • Vibration : .....                    | 10/2000 Hz – 20 G |
| • High temperature endurance : .....   | 1000 H            |

### Electrical

- |                                 |                   |
|---------------------------------|-------------------|
| • Working voltage : .....       | 250 Vrms 50 Hz    |
| • Test voltage : .....          | 500 Vrms 50 Hz    |
| • Rated current : .....         | 1 A Rms.          |
| • Insulation resistance : ..... | > 1000 M $\Omega$ |
| • Contact resistance : .....    | < 6 m $\Omega$    |
| • VSWR : .....                  | < 1,5 at 4 GHz    |
| • Insertion loss : .....        | < 0,3 dB at 2 Ghz |

Nota : All sizes are in millimetres.

# TYPE INDEX

## ■ COAXIAL CONNECTORS NANOMIN 4 GHz

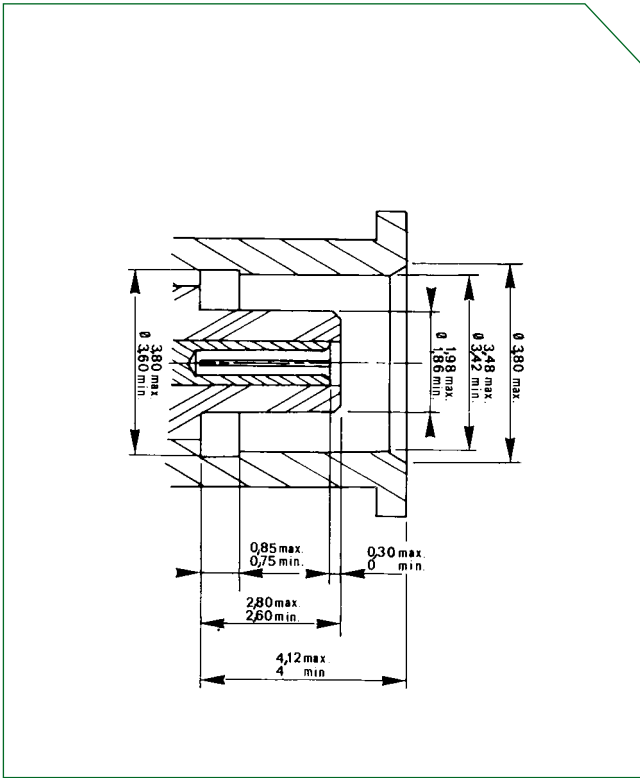
TYPES	REFERENCES							PAGES	see p. 2
	Cable soldering	Cable screwing	Cable crimping	PCB soldering	Panel mounted	Bulk head mounted	50 Ohms load		CABLE GROUPS
STRAIGHT FEMALE PLUG	B 480 C13							38	A
	B 480 C14							38	B
	B 480 C15							38	C
	B 480 C16							38	D
	B 480 C17							38	E
	B 480 C20							38	F
RIGHT ANGLE FEMALE PLUG	B 480 C04	B 480 C05						39/40	A
	B 480 C06	B 480 C07						39/40	B
	B 480 C10	B 480 C11						39/40	C
	B 480 C08	B 480 C09						39/40	D
	B 480 C12							39	E
	B 480 C21							39	F
MALE SOCKETS			B 480 C01	B 480 C02	B 480 C29	B 481 C18		36/37	
			B 481 C01	B 481 C02	B 481 C22			37	
				B 481 C18				37	
							B 481 C19	37	

## ■ TOOLS

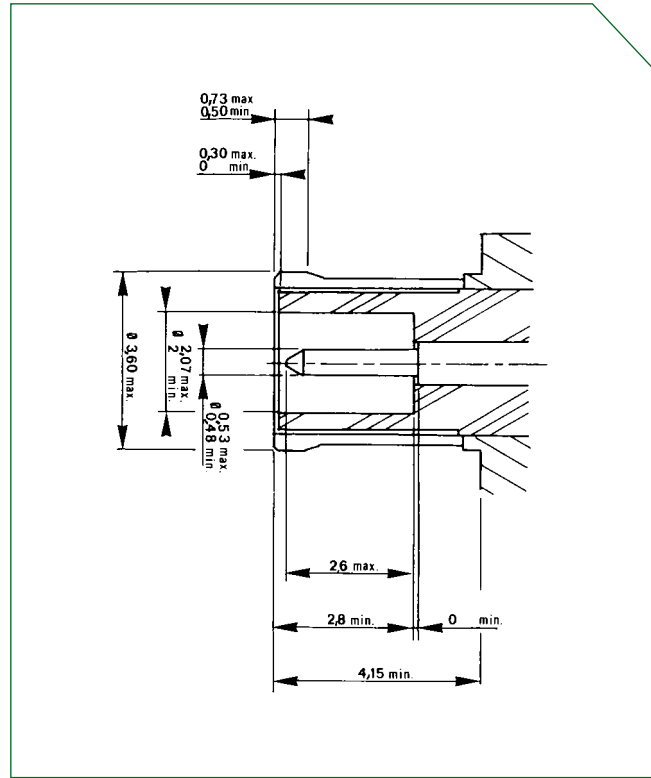
EXTRACTION PLIERS	B 480 C23							40	
CRIMPING TOOL	B 480 C24							40	

# INTERCHANGEABILITY

## ■ FEMALE



## ■ MALE



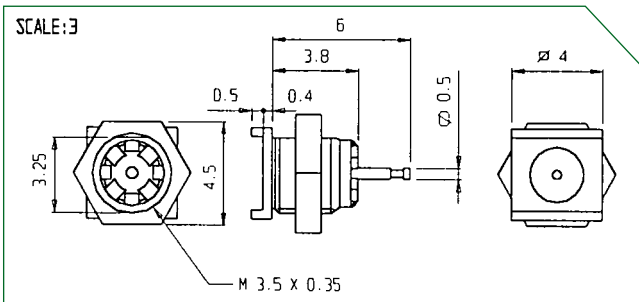
Sizes bordered for B 480 C Serie only.

**PATENTED**

# MALE SOCKET WITH ANTIROTATION

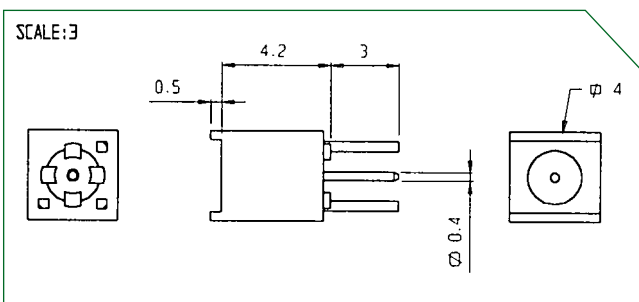
## B 480 C serie

### B 480 C 01



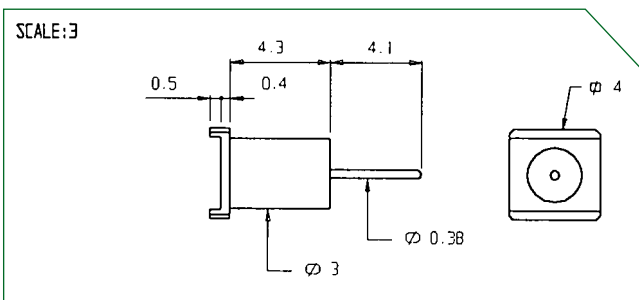
- Panel mounting thickness 1.5 mm max.
- Drilling **Type I** : page 41.

### B 480 C 02



- Straight P.C.B. thickness 1.6 mm nom.
- Drilling **Type II** : page 41.

### B 480 C 29

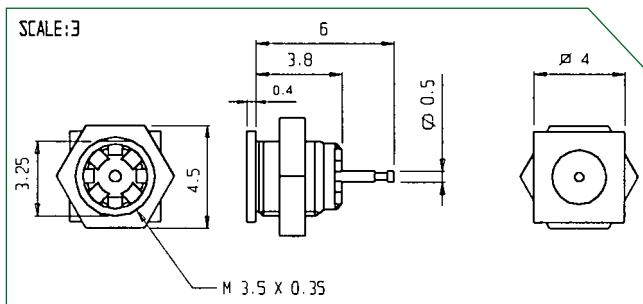


- Hermetic for direct soldering panel thickness 3 mm max.
- Drilling **Type III** : page 41.
- Assembly **M3** : page 42.

# MALE SOCKET WITHOUT ANTIROTATION

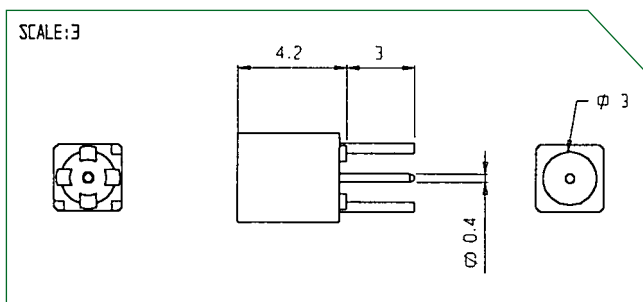
## B 481 C serie

### B 481 C 01



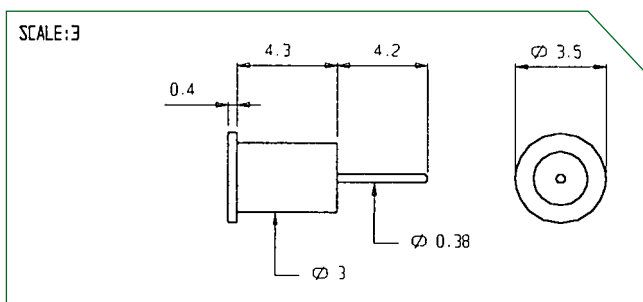
- Panel mounting thickness 1,5 mm max.
- Drilling **Type I** : page 41.

### B 481 C 02



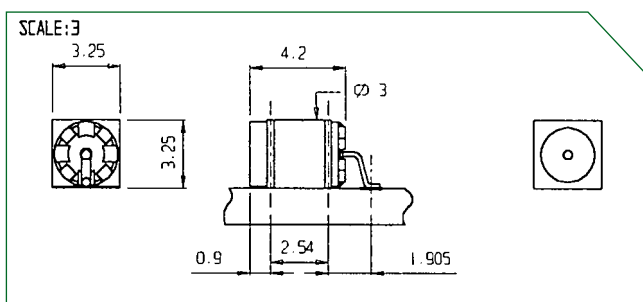
- Straight P.C.B. thickness 1.6 mm nom.
- Drilling **Type II** : page 41.

### B 481 C 22



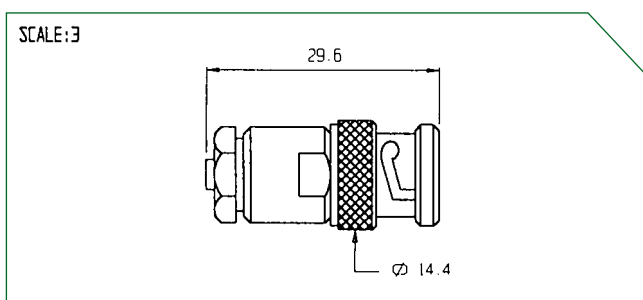
- Hermetic for direct soldering panel thickness 3 mm max.
- Drilling **Type III** : page 41.
- Assembly **M3** : page 42.

### B 481 C 18



- Straight P.C.B. surface mount.
- Assembly **Type IV** : page 41.

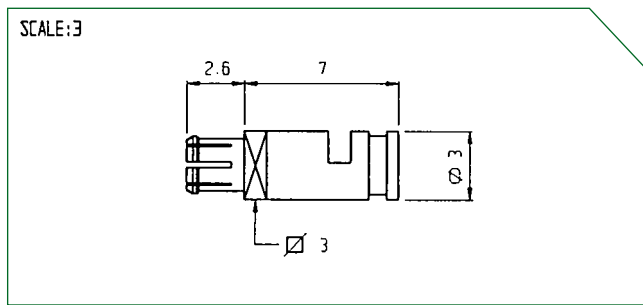
### B 481 C 19



- BNC adapter .

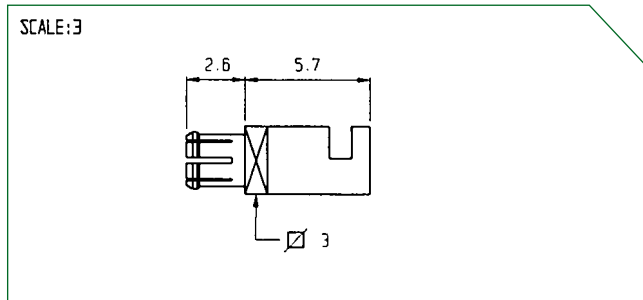
# STRAIGHT FEMALE PLUG SOLDERING VERSION

## B 480 C serie



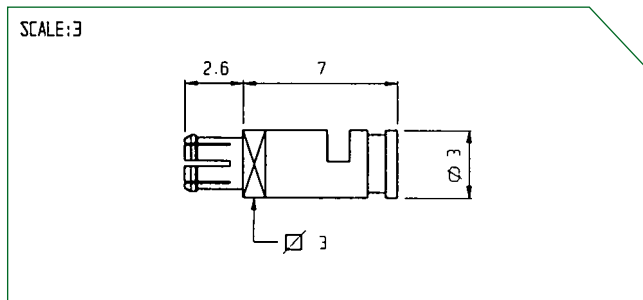
### B 480 C 13

- Group **A** cables.
- Assembly **M1** : page 42.



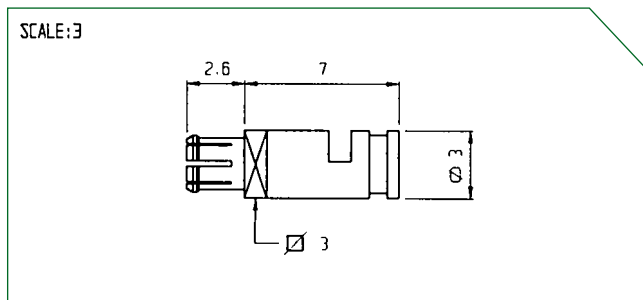
### B 480 C 14

- Group **B** cables.
- Assembly **M1** : page 42.



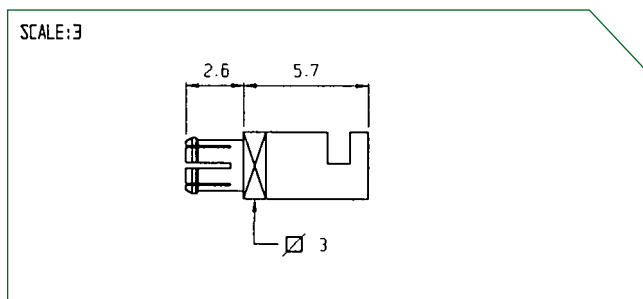
### B 480 C 15

- Group **C** cables.
- Assembly **M1** : page 42.



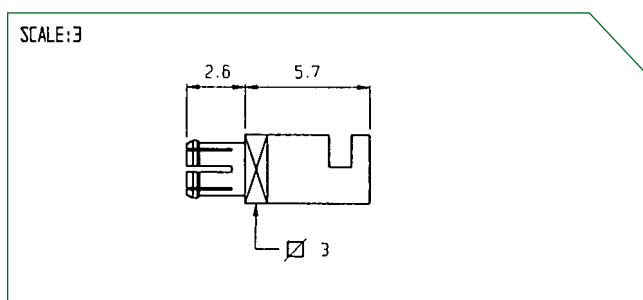
### B 480 C 16

- Group **D** cables.
- Assembly **M1** : page 42.



### B 480 C 17

- Group **E** cables.
- Assembly **M2** : page 42.



### B 480 C 20

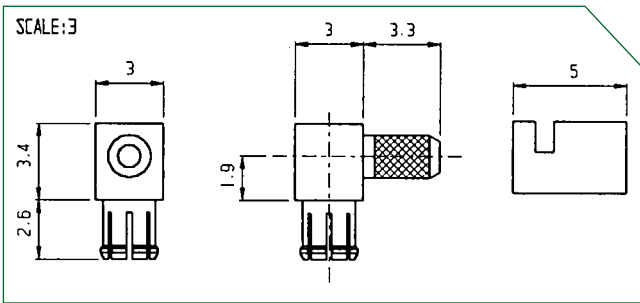
- Group **F** cables.
- Assembly **M2** : page 42.



# RIGHT ANGLE FEMALE PLUG SOLDERING VERSION

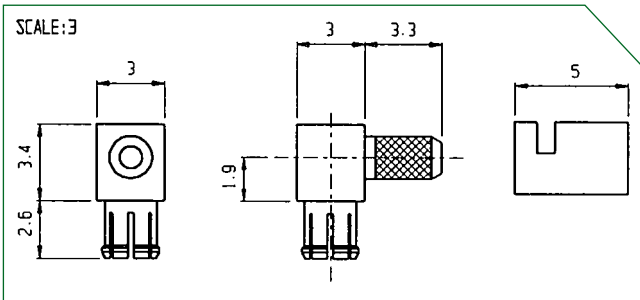
B 480 C serie

Extraction tool page 41



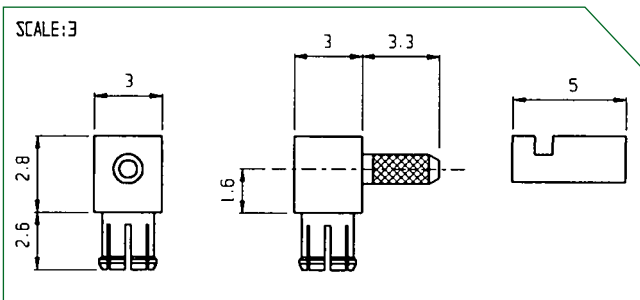
## B 480 C 04

- Group **A** cables.
- Assembly **M4** : page 43.



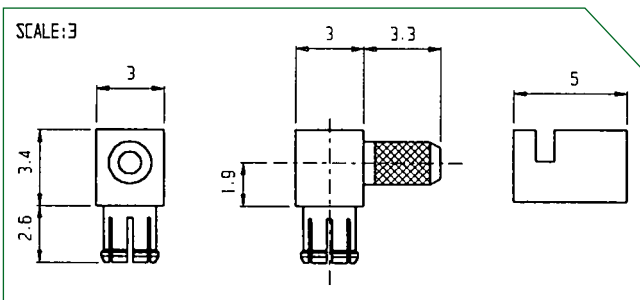
## B 480 C 06

- Group **B** cables.
- Assembly **M4** : page 43.



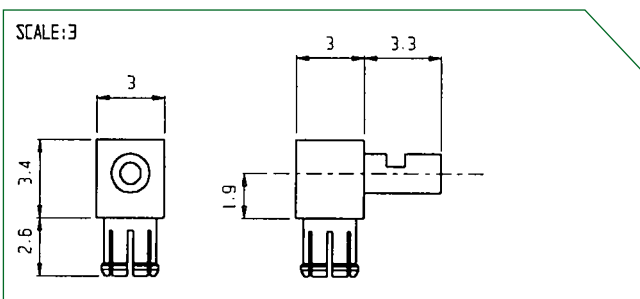
## B 480 C 10

- Group **C** cables.
- Assembly **M4** : page 43.



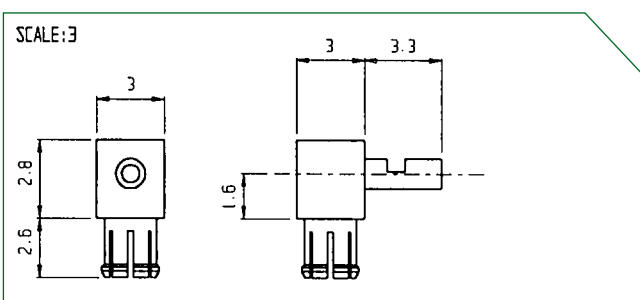
## B 480 C 08

- Group **D** cables.
- Assembly **M4** : page 43.



## B 480 C 12

- Group **E** cables.
- Assembly **M5** : page 43.

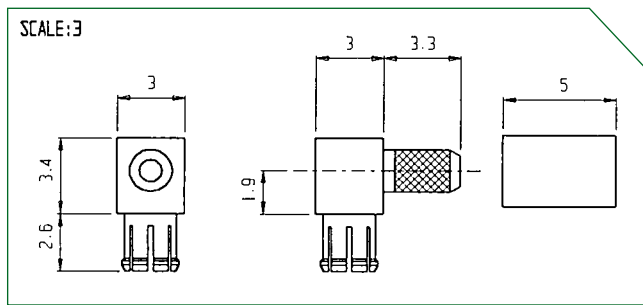


## B 480 C 21

- Group **F** cables.
- Assembly **M5** : page 43.

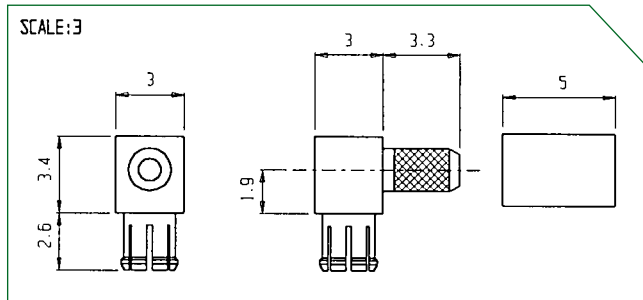
# RIGHT ANGLE FEMALE PLUG CRIMP VERSION

## B 480 C serie



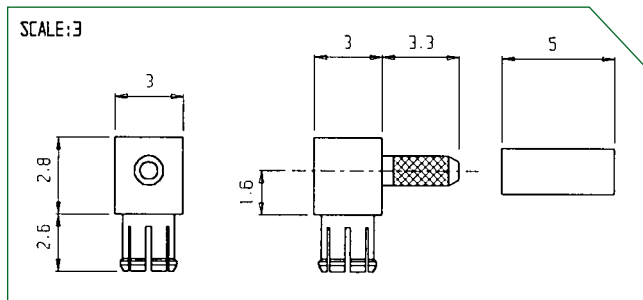
### B 480 C 05

- Group **A** cables.
- Assembly **M6** : page 43.



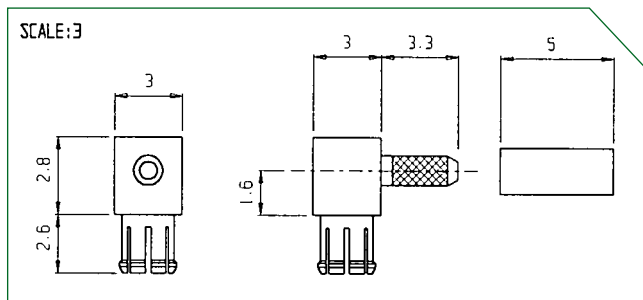
### B 480 C 07

- Group **B** cables.
- Assembly **M6** : page 43.



### B 480 C 11

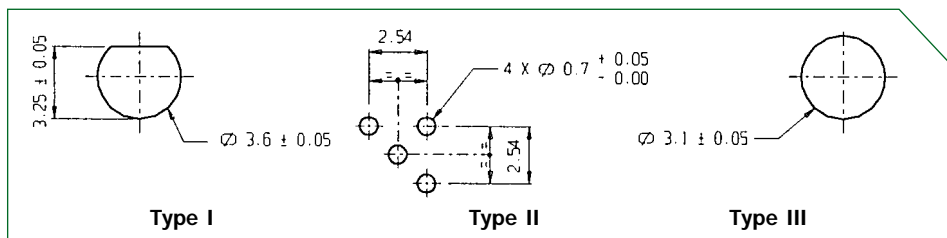
- Group **C** cables.
- Assembly **M6** : page 43.



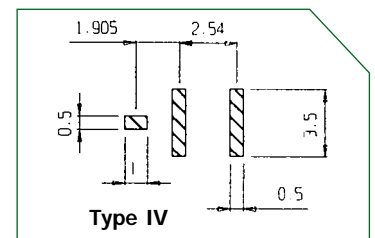
### B 480 C 09

- Group **D** cables.
- Assembly **M6** : page 43.

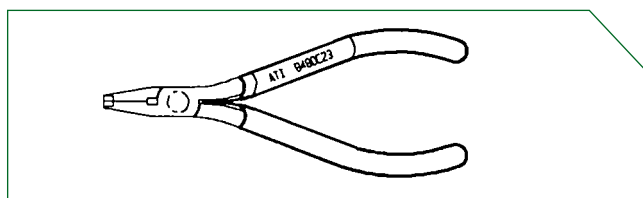
### ■ DRILLING PLAN



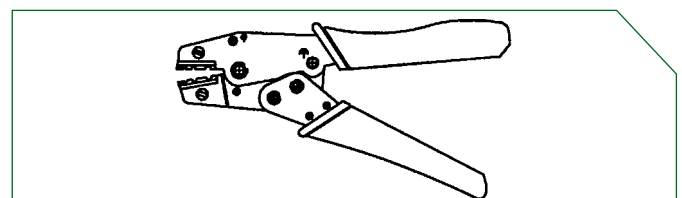
### ■ ASSEMBLY PROCEDURES



### ■ EXTRACTION PLIERS for right angle plug B 480 C23



### ■ CRIMPING TOOL B 480 C 24

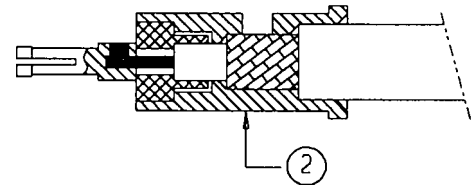
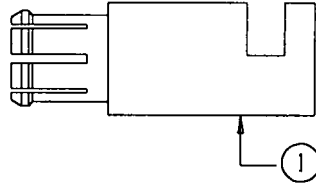
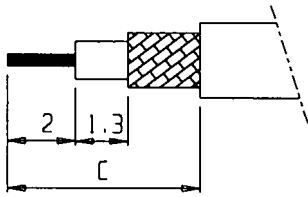


# ASSEMBLY PROCEDURES

## ■ ASSEMBLY PROCEDURES M1

### STRAIGHT PLUG SOLDER version flexible cable attachment

#### Cable preparation



- T in the central core.
- Push cable fully into inner body (2).
- Solder the cable core to the inner contact.
- Push the connector body (1) over the inner part (2).
- Solder the connector inner part (2), connector body (1), and cable screen.

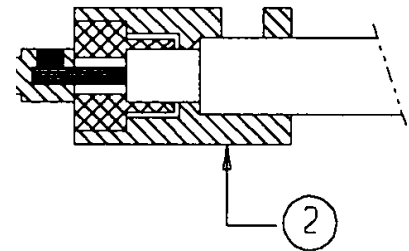
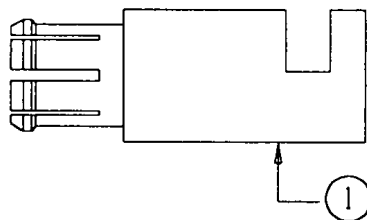
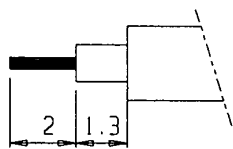
Tin 60/40.

Reference B 480 ...	C
C 13	5
C 14	6.4
C 15	5
C 16	5

## ■ ASSEMBLY PROCEDURES M2

### STRAIGHT PLUG SOLDER version semi-rigid cable attachment

#### Cable preparation

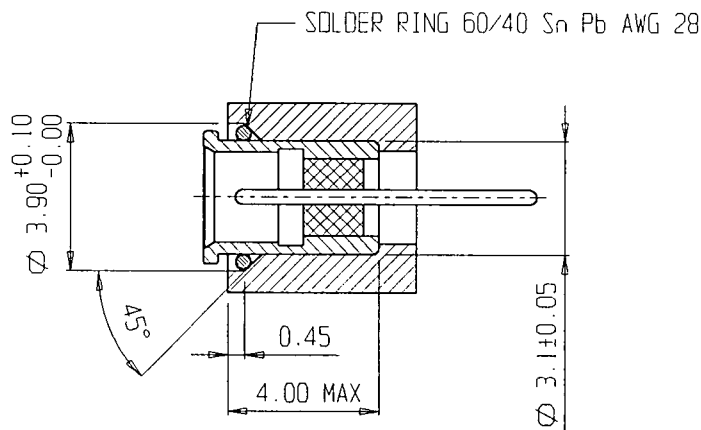


- T in the central core.
- Push cable fully into inner body (2).
- Solder the cable core to the inner contact.
- Push the connector body (1) over the inner part (2).
- Solder the connector inner part (2), connector body (1), and cable sheath.

Tin 60/40.

## ■ ASSEMBLY PROCEDURES M3

### HERMETIC SOCKETS



Body : brass or Dilver P .

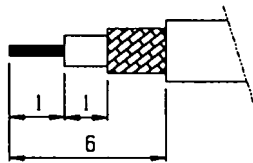
Platings : tin alloy , silver alloy , gold.

# ASSEMBLY PROCEDURES

## ■ ASSEMBLY PROCEDURES M4

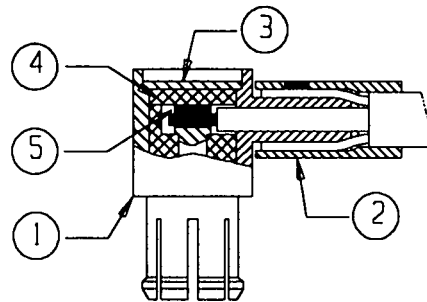
### RIGHT ANGLE PLUG SOLDER version flexible cable attachment

#### Cable preparation



- T in the central core and fit the cap [2].
- Push cable fully into inner body [1].
- Push the cap [2] over the screen and solder .
- Solder the cable core to the inner contact [5].
- Push insulator pad [4] into back of connector body .
- Push the washer [3] into back of connector body [1] and solder .

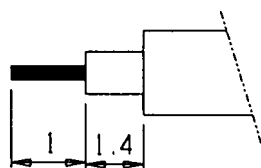
Tin 60/40.



## ■ ASSEMBLY PROCEDURES M5

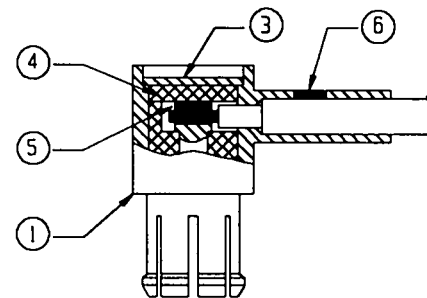
### RIGHT ANGLE PLUG SOLDER version semi-rigid cable attachment

#### Cable preparation



- T in the central core.
- Push cable fully into inner body [1].
- Solder the cable sheath into connector body [6].
- Solder the cable core to the inner contact [5].
- Push insulator pad [4] into back of connector body .
- Push the washer [3] into back of connector body [1] and solder .

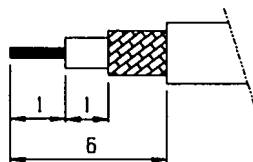
Tin 60/40.



## ■ ASSEMBLY PROCEDURES M6

### RIGHT ANGLE PLUG CRIMP version flexible cable attachment

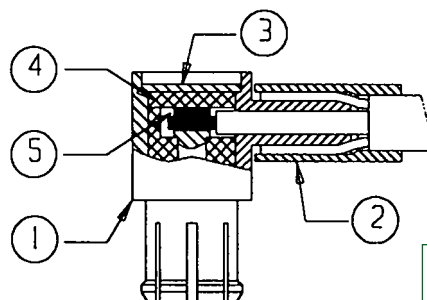
#### Cable preparation



- T in the central core and fit the cap [2].
- Push cable fully into inner body [1].
- Push the cap [2] over the screen and crimp.
- Solder the cable core to the inner contact [5].
- Push insulator pad [4] into back of connector body .
- Push the washer [3] into back of connector body [1] and solder .

Tin 60/40.

Crimping tool B 480 C 24.



Reference B 480 ...	Hexa. / flat
C 05	2.66
C 07	3
C 09	3
C 11	1.85
C 25	1.85



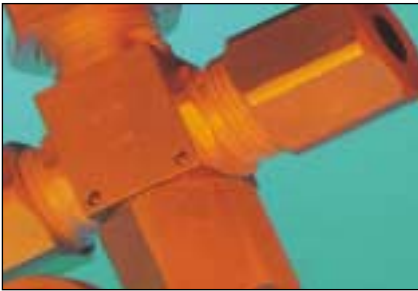


## COAXIAL CONNECTORS HN

FOR NUCLEAR INSTRUMENTATION

# INTRODUCTION

---



## Features

Data signal transmissions coming from security terminals in environments subject to nuclear radiation require the use of high reliability coaxial connectors.

For that purpose, ATI has, in collaboration with the CEA electronic departments, developed a range of special connectors, the HN series, (interchangeability standard defined through US MIL C 3643 A).

- The operating characteristics to which these connectors may be subjected often require special features achieved in close collaboration with the user :
  - Performance in ionizing environment with doses  $5 \cdot 10^6$  Gy (absorbed dose unit : GRAY (Gy) – Gy =  $10^2$  Rad).
  - Insulation resistance between central contact and outer sheathing over  $10^{14} \Omega$ .
  - Conduction resistance of sheathing extremely low, which could require sandwich metallic structures, i.e. copper + stainless steel.
  - Operating in atmosphere of nitric acid vapour.
  - Using cables with special insulators, with double or triple braiding, and outer diameter between 3 and 20 mm.

## Construction

	<b>Standard types</b>	<b>Types on special request</b>
• Body and male contacts :	Brass	APX stainless steel produced under vacuum.
• Female contacts :	Heat treated beryllium copper	Heat treated beryllium copper
• Seal gaskets :	Silicone Elastomer 75 sh.	Viton/Kel-F/Buna N.
• Protection :	Silver-Plating 5 microns P.	Nickel-Plating 10 microns or Gold-Plating.
• Insulators :	PTFE Teflon	Raw polysulfone or heat treated alumina AL 99.
• Storage :	Type EDF 5 YEARS	Long-term storage.

# INTRODUCTION

## Technical characteristics

- Temperature :
 

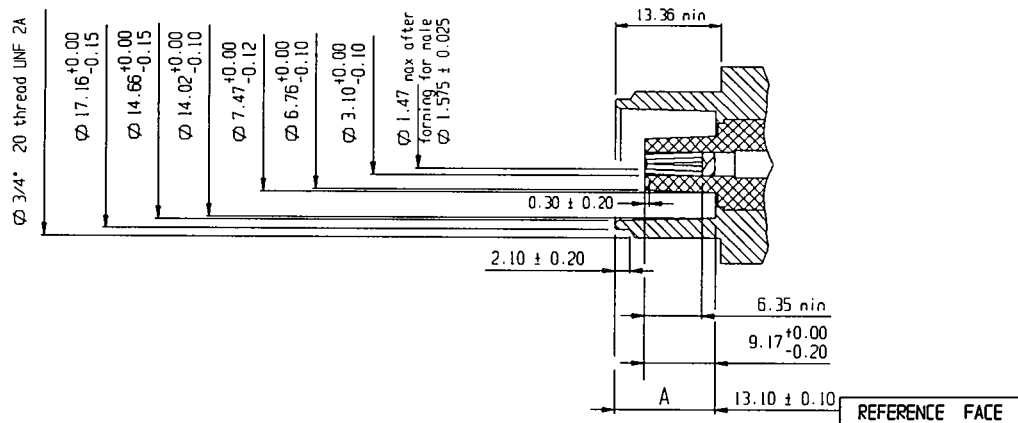
PTFE insulators	-40° to +140°C	200°C Peak
Polysulfone insulators	-40° to +170°C	
Alumina insulators	-40° to +200°C	
- Maximum operating voltage : 2 500 Vcc
- Test voltage : 5 000 Vcc
- Characteristic impedance : 50 Ω
- Operating critical frequency : 3 000 MHz
- Voltage standing wave ratio : < 1,3 to 2 000 MHz (PTFE insulator).
- When mated the connectors are splash proof.
- Radiation performance :
 

PTFE insulators	5,10 <sup>2</sup> Gy
Polysulfone insulators	2,5.10 <sup>6</sup> Gy
Alumina insulators	
- Insulation : ≥ 10<sup>10</sup> Ω (on request ≥ 10<sup>13</sup> Ω)
- Tightening torque :
 

on coupling	5 up to 10 Nm
on cable clamping	5 up to 10 Nm
on switchboard nut	20 up to 30 Nm
- Operating cycles : 250 (See Note\*)

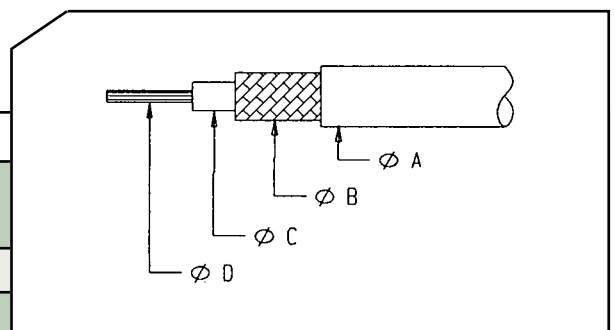
(\* In some conditions, in order to achieve the maximum insulation resistance cleaning may be required during handling and assembly.

### Female interface



## Recommended cables

REFERENCES	Ø A	Ø B	Ø C	Ø D
Précable CZ24B or CZ23C	14.2	10.2 10.3	7.25 7.4	2.25 0.5
Fileca F. 1209/9	13.7	10.5	7.4	2.5
Fileca F. 1209/8	6.5	5.2	3.2	1.0



## Special cables

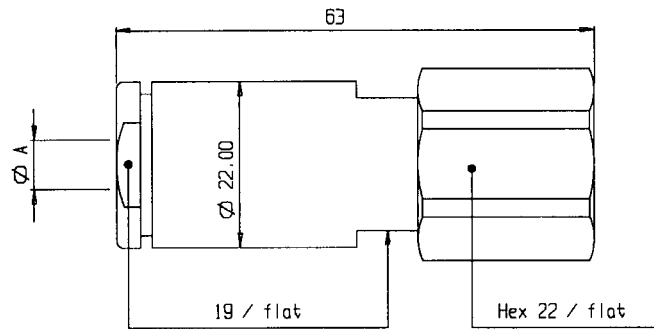
- Installation on request.



# MALE PLUG AND RECEPTACLE

## ■ STRAIGHT MALE PLUG

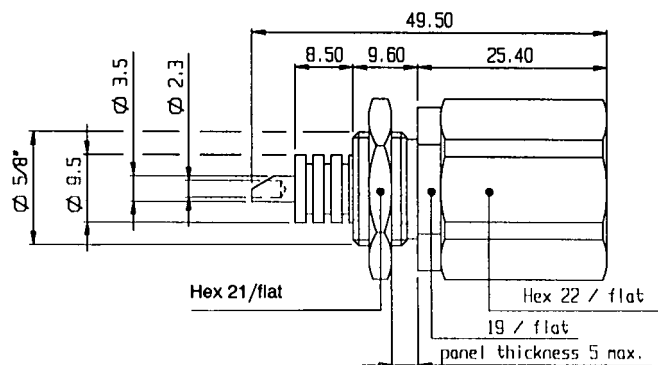
- For cable.
- Assembly : page 50.



Cable types	Ø A	REFERENCES OF MALE PLUGS		
		PTFE insulators	Polysufone insulators	Alumina insulators
FILECA F 1 209/8	6.5 maxi.	22314	B 440 C 01	B 460 C 01
FILECA F 1 209/9	13.6 maxi.	22315	B 440 C 02	B 460 C 02
PRECICABLE CZ 23 C	14.0 maxi.	22330	B 440 C 05	B 460 C 08
PRECICABLE CZ 24 B	14.0 maxi.	22330	B 440 C 06	B 460 C 09

## ■ PANEL MALE RECEPTACLE

- Rear mounting.
- Drilling : Ø 16,2.

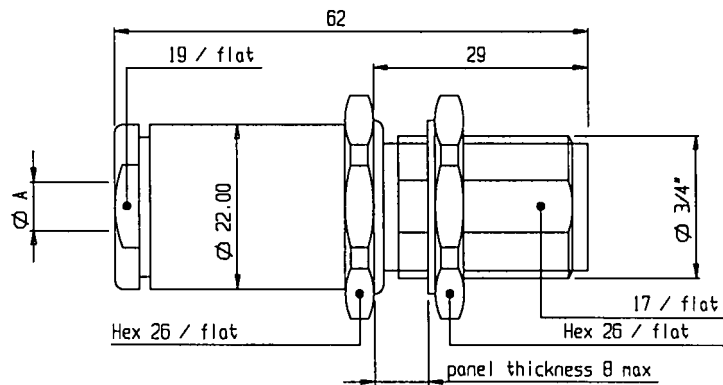


REFERENCES OF MALE RECEPTACLES	
PTFE insulators	Polysufone insulators
22321	B 440 C 10

# FEMALE PLUG AND RECEPTACLE

## ■ STRAIGHT FEMALE PLUG

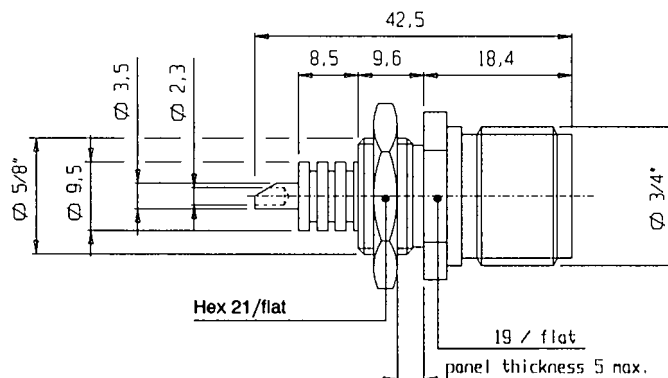
- For cable.
- Assembly : page 51.



Cable types	Ø A	REFERENCES OF FEMALE PLUGS		
		PTFE insulators	Polysufone insulators	Alumina insulators
FILECA F 1 209/8	6.5 maxi.	22316	B 422 C 01	B 458 C 01
FILECA F 1 209/9	13.6 maxi.	22317	B 422 C 02	B 458 C 02
PRECICABLE CZ 23 C	14.0 maxi.	22331	B 422 C 08	B 458 C 08
PRECICABLE CZ 24 B	14.0 maxi.	22331	B 422 C 09	B 458 C 09

## ■ PANEL FEMALE RECEPTACLE

- Rear mounting.
- Drilling : Ø 16,2.

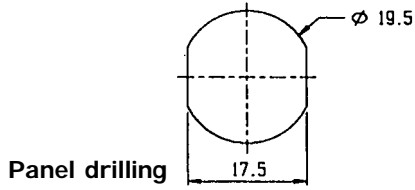


REFERENCES OF FEMALE RECEPTACLES	
PTFE insulators	Polysufone insulators
22322	B 422 C 10

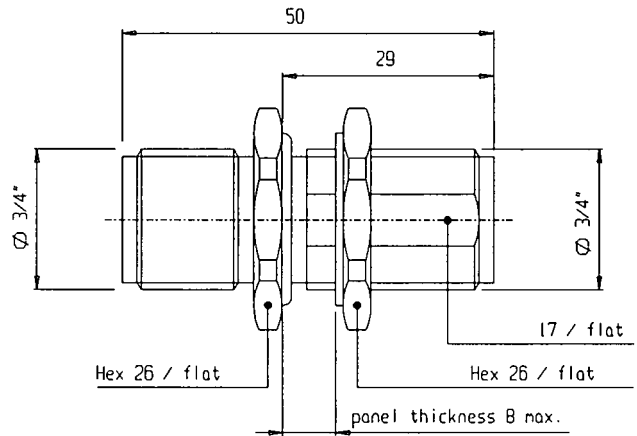
# FEMALE COUPLER AND RECEPTACLE - T PIECE

## ■ HERMETIC FEMALE COUPLER

- Panel mounting.

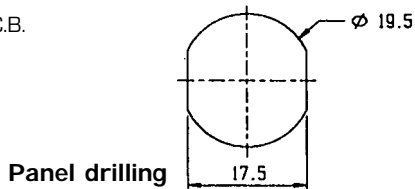


REFERENCES HERMETIC FEMALE COUPLER		
PTFE insulators	Polysufone insulators	Alumina insulators
22279	B 422 C 05	B 458 C 05

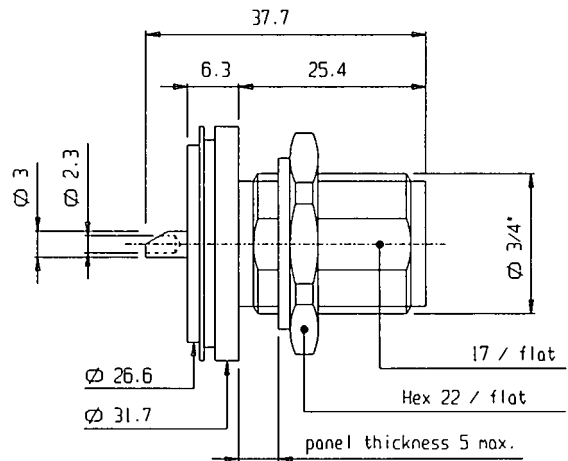


## ■ PANEL FEMALE RECEPTACLE

- Front mounting.
- Solderable on P.C.B.



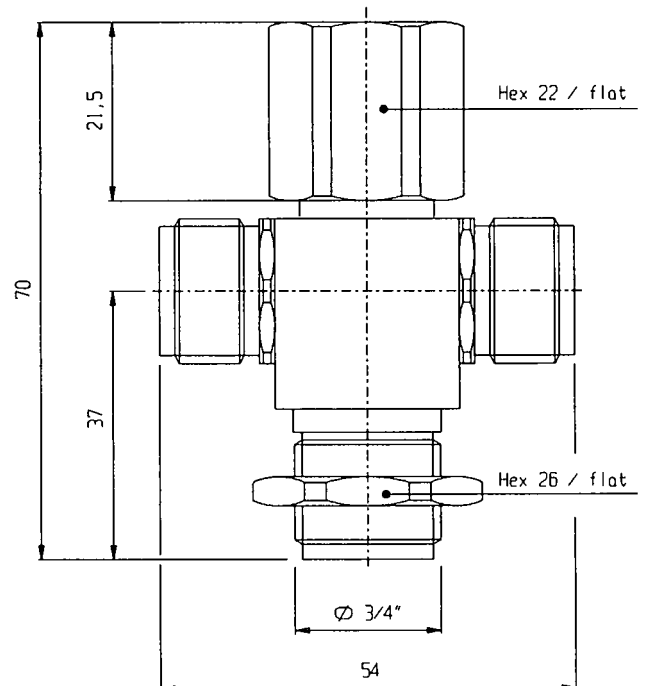
REFERENCES PANEL FEMALE RECEPTACLE		
PTFE insulators	Polysufone insulators	Alumina insulators
22323		



## ■ T PIECE

- 3 female terminations.
- 1 male termination.

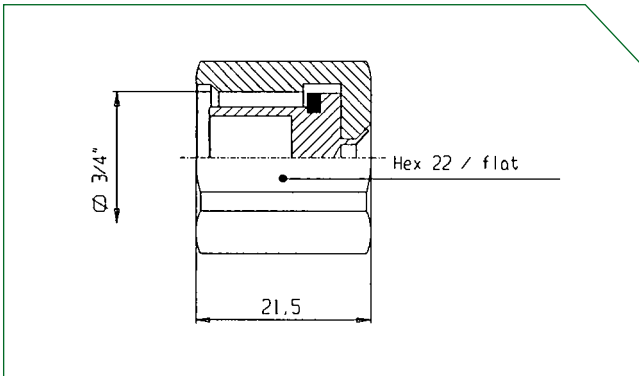
REFERENCES T PIECE		
PTFE insulators	Polysufone insulators	Alumina insulators
22092	B 422 C 06	B 458 C 06



# SEAL FOR PLUGS - ASSEMBLY PROCEDURE

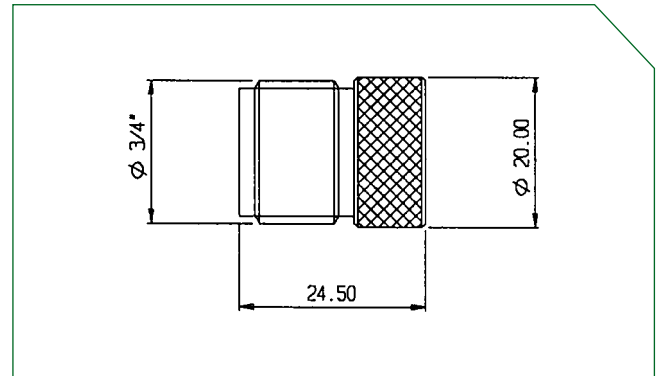
## ■ SEAL FOR FEMALE SOCKET

### 22318 serie



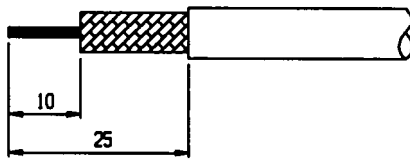
## ■ SEAL FOR MALE PLUG

### 22319 serie

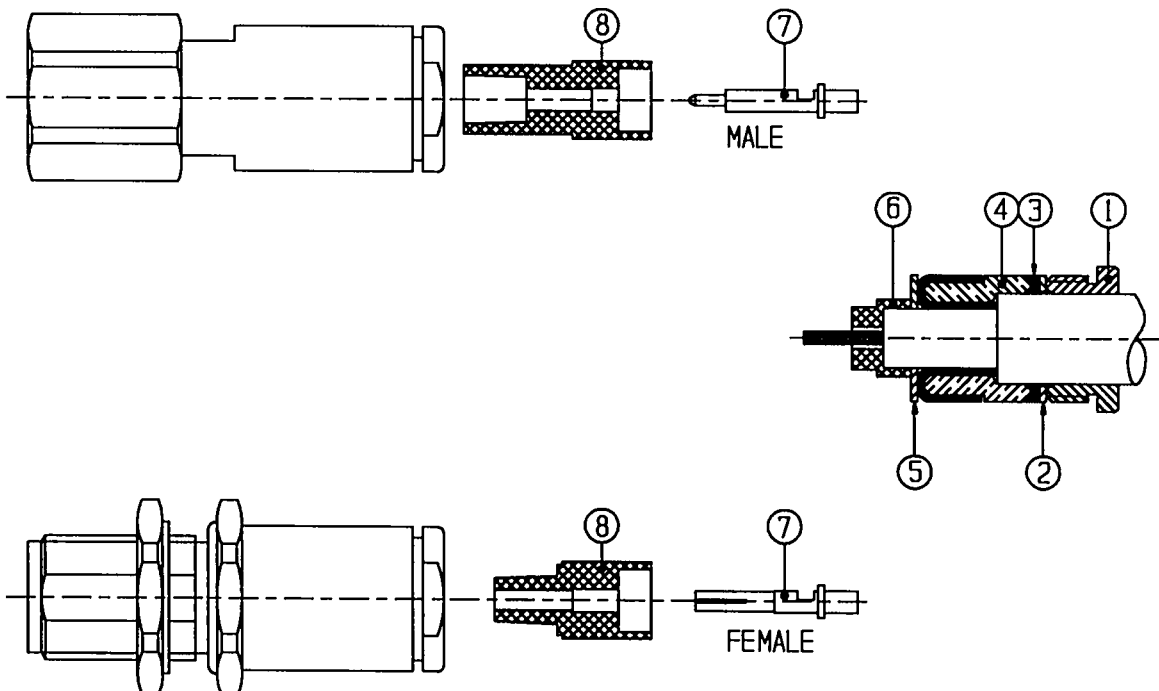


## ■ ASSEMBLY PROCEDURE

### Cable preparation



- Fit nut [1] rear washer [2] and seal [3] on the cable.
- Fit the grounding cap [4], fold back the braid and cut off protruding strands if necessary.
- Strip the central core.
- Fit the front washer [5] then the insulator [6].
- Fit the contact [7] on core and solder it.
- Fit the insulator [7] on the contact [8].
- Fit the whole in the body, tighten and seal the nut.



This catalogue only refers to the standard types.

ATI also realizes any special connector and any coaxial cable installation on request.

Please, take advice.

Address all correspondence to : ATI - 91031 EVRY cedex - FRANCE

**ATI**  
*électronique*

6, rue Jean Mermoz - ZA de Saint-Guénault  
91080 COURCOURONNES - FRANCE  
Tél. : 33 (0)1 69 36 64 00 - Fax : 33 (0)1 64 97 14 84  
[www.ati-electronique.fr](http://www.ati-electronique.fr)