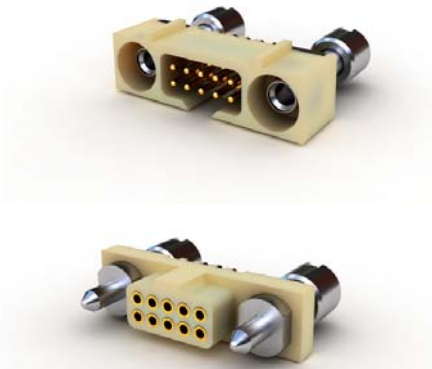


1 MM PITCH CONNECTORS



- High reliability 1 mm pitch connector
- Machined LF contacts
- PCB assembly:
 - TH (through hole) & SMT
 - Straight,
 - 90° (right angle)
- Built-in jackscrews & Guiding
- Temperature range -60° C / +150° C
- Stacking height: 5.2 mm between boards
- RoHs compliant
- Qualification following MIL-DTL-55302, EIA 364, IEC 512

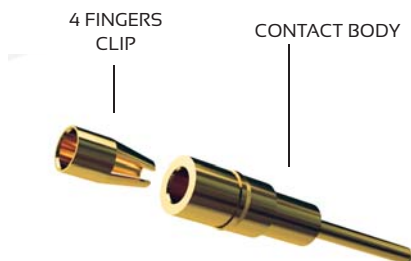
Specifications

Materials	
Insulator	Thermoplastic material with glass fiber reinforcement / UL 94 V0
Male contacts	Copper alloy gold plated
Female contacts	Outer body: copper alloy, gold plated Inner clip: beryllium copper, gold plated
Guides	Stainless steel

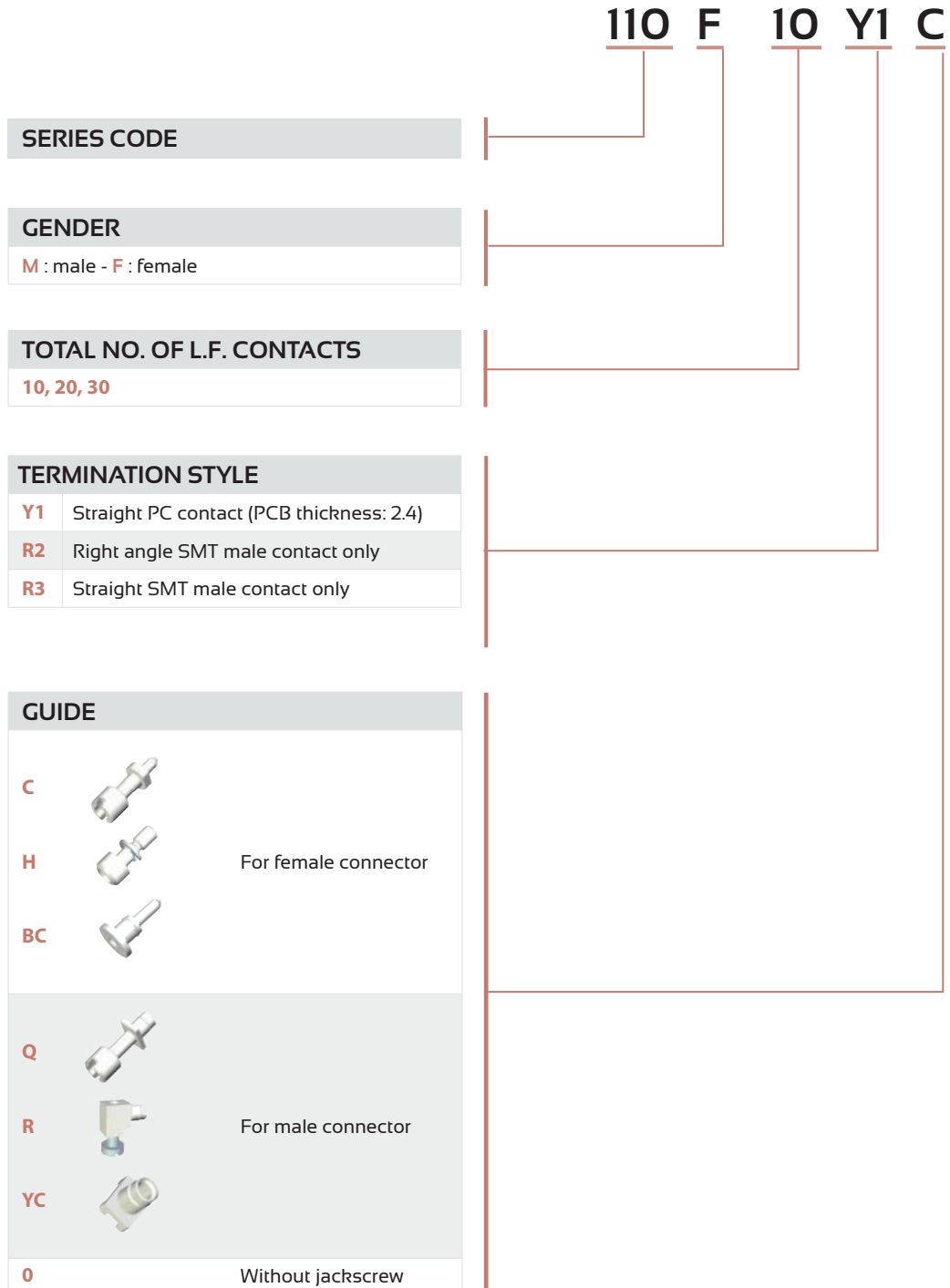
Electrical characteristics	
Working voltage	60 V DC or AC
Proof voltage	360 V DC or AC
Nominal current	1,5 A max at 25° C
Contact resistance	10 mΩ max.
Insulation resistance	2 GΩ min. (500 V DC)

Mechanical characteristics	
Mating force per contact	0.3 N
Unmating force per contact	0.1 N
Fixing & tightening torque	0.15 Nm
Mechanical operations	> 500 cycles
Contact retention/Housing	4 N mini

Environmental characteristics	
Operating temperature	-60° C to 150° C
Sinusoidal vibrations	10 to 2000 Hz, 1.5mm/10 g, 3 axis, 3 hrs
Random vibrations	10 to 2000 Hz, 0.04 g ² /Hz (9 g RMS, 3 axis, 3 hrs)
Shock	100 g - 6 ms
Soldering temperature	>200° C during 40 sec, peak 240° C
Minimal wiping length	0.7 mm



How to order



110 F 10 Y1 C